

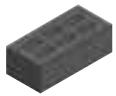


**Bricks for the Future from Island Block & Paving offer a state of the art patented brick selection, nationally recognised for its unique surface textures, inspirational modern colours and Global Green Tag certification.**



- ✔ Stylish finishes
- ✔ Lighter = easy to lay
- ✔ 100% Colourfast
- ✔ Bricklayer friendly
- ✔ True to size





## THE BRICK STORY

Bricks for the Future offer a high-quality, environmentally responsible brick collection from Australia's leading independently owned brick manufacturer, Island Block & Paving.

Bricks for the Future are manufactured from a high-quality engineered sand, consisting of processed coloured recycled glass aggregates. Patented and Global Green Tag certified, Bricks for the Future are the quality brick choice. Available in two sophisticated types - the "Premium Range" and the "Designer Range". The high-end range has many surface finishes, including smooth, exposed aggregate, refined, and polished all of which provide a multitude of design options for the architecturally inspired.

**PREMIUM BRICK RANGE**- Global Green tag certified, made with recycled coloured glass aggregates in on trend colours which provide a unique surface that softly glistens in the light.

**DESIGNER BRICK RANGE**- Contemporary colours and neutral blends, designer bricks are made with natural sand aggregates. In demand whites and pastels are a speciality.



**Colours And Style:** Bricks for the Future offer a vast range of unique brick colours and textures. All Bricks for the Future are colourfast, the colour is blended throughout the brick ie. not a surface coating that can chip off.



**Low Maintenance:** Bricks for the Future require minimal maintenance to keep them looking pristine. An advantage over cladding products is bricks allow the householder to enjoy their home without concerns on future maintenance.



**Robust:** Bricks for the Future are very strong and extremely noise resistant. Their fire resistance is perfect for Australia's harsh environment. Bricks for the Future also have a security advantage over cladding options as due to their durability they resist termites and any other unwelcome visitors.



**Affordable:** Bricks for the Future are affordable and despite their uniqueness they are very price competitive.



**Energy Efficiency:** Bricks for the Future have a high thermal mass producing a much cooler house in summer and warm house in winter, therefore reducing household energy costs.



**Sustainability:** Bricks for the Future are manufactured to stand the test of time, no replacement costs. Recycled aggregates are used where possible meaning landfill is reduced. Modern natural curing methods which reduce energy consumption are implemented, 100% captured water is used and CO2 emissions are reduced.

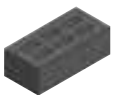
To view the Bricks for the Future Premium range Life Cycle Analysis  
[islandblock.com.au/bricks/](http://islandblock.com.au/bricks/)



Pearl ECO & Walnut ECO



Pure White



## SELECTING YOUR BRICK

### Step 1: YOUR DESIGN

The type of new home design, look, texture, colour and the locality of the home may influence the type of bricks and mortar joints selected. Free brick samples as well as informative Sales Representatives are available to assist with plan estimating, pricing, colour or mortar recommendations if required.

### Step 2: COLOUR & SURFACE TEXTURE

The appearance and feel of the Brick type selected will help create an individual style of home. Bricks for the Future colours vary from light neutral tones to deep dark tones and subtle blends. Two ranges are available- the PREMIUM RANGE made with coloured recycled glass aggregates and the DESIGNER RANGE made with natural aggregates. Both brick ranges consist of four types of textures "Smooth", "Exposed", Refined and Polished.

### Step 3: MORTAR

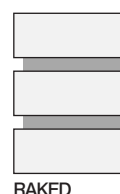
The type of mortar joint (between the bricks) can have a definitive impact on the appearance of any bricks.

Common Mortar Colours- Natural or Grey, White, Off white, Coloured mortar to match the brick colour

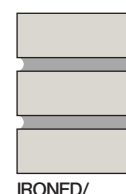
### Step 4: TYPES OF MORTAR JOINTS

Common Mortar Joints- The mortar joint refers to how the band of mortar between the bricks is finished.

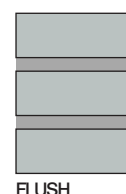
#### TYPES OF MORTAR JOINTS



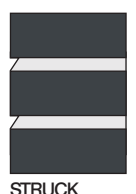
RAKED



IRONED/  
ROLLED



FLUSH



STRUCK

# FREQUENTLY ASKED QUESTIONS

## What are the benefits of "Bricks for the Future" over clay bricks?

100% of clay is a natural resource mined from the environment. 40% of "Bricks for the Future" is recycled aggregate. "Bricks for the Future" are 100% Australian made, many clay bricks are imported from overseas at a high price. "Bricks for the Future" have advantages in that they absorb less water, are dimensionally more accurate and have a better range of dark and pastel colours particularly whites. Colour is blended throughout the "Bricks for the Future" products, therefore the problem of chipping of the glazed or painted surface coating on clay bricks does not exist with "Bricks for the Future" bricks. The entire range of bricks are manufactured with a Tech Dry water repellent emulsion, which is blended throughout the products in manufacture. This provides water resistant products that are stain resistant, provide clean colours that are colourfast and prevent efflorescence. These properties are all important in exterior products exposed to Australian weather conditions. Testing is available.

## Do the "Bricks for the Future" need to be acid cleaned after laying?

Controlled water pressure cleaning is preferred over acid cleaning. Any cleaning is optional as it depends on several factors. For example, are there cement mortar smears that need removing? Does the product just need a general clean? Does the customer want a light acid wash to highlight the glass feature aggregates? Island Block & Paving stock "Guard It" acid replacement if acid washing is required.

## With Refined or Polished finish Bricks, what happens with the corners/sills where brick ends are visible?

For all orders, 8 % of bricks are supplied with the Refined finish on one face + 1 end to be used on all external corners and sills, these are stacked separately and clearly identified. Extra bricks can be purchased for an additional cost.

## With Exposed finish Bricks, what happens with the corners/sills where brick ends are visible?

Every brick as they go through the shotblasting machine is exposed on one face as well as one end at no additional cost. Therefore, all bricks are delivered with a face and one brick end exposed. If two ends are required to be exposed, this can be achieved at an additional cost.

## Are the Premium and Designer ranges both made with engineered sand from coloured glass aggregates?

No, the Premium range is made with engineered sand from coloured glass aggregates, the Designer range is made with natural aggregates. Colours made with glass sand are identified by ECO I.E "Pearl ECO" etc.

## If all Bricks for the Future are supplied with six holes in them, are solids and 45-degree squints available?

Yes, Solids and solid squints can be ordered at an additional cost, solids are generally used where a protruded sill is visible or as door sills. Squints are used for 45-degree angles to save cutting.

## Do the "Bricks for the Future" have a product warranty and suggested lifespan?

View the 25-year product warranty at [islandblock.com.au](http://islandblock.com.au), with the compressive strengths achieved and manufacturing initiative's, the expected life span is 100+ years.

## Are Bricks for the Future suitable for Brick slips or Brick facings for commercial projects?

Yes, all finishes are available, two facings can be cut out of one single brick.

## What is the recommended mortar mix?

**MORTAR RECOMMENDATION:** 1 part cement + 1 part Builders Lime + 6 parts bricklayer's sand + 50 mL max of Plasticiser.

**NOTE:** Excess Plasticiser can severely weaken the mortar mix. A stronger mortar is required near coastal areas per AS 3700.

**WHITE MORTAR MIX:** 1 part Aalborg pure white cement + 1 part Builders Lime + 6 parts white bricklayer's sand + 300 grams white oxide + 50 mL max of Plasticiser.

**BLACK MORTAR MIX:** 1 part Aalborg pure white cement + 1/2-part Builders Lime + 6 parts white bricklayer's sand + 600 grams Black oxide + 50 mL max of Plasticiser.





Pearl ECO



Ebony ECO, Pewter ECO & Mist ECO

# PREMIUM RANGE

## SMOOTH FINISH

Premium Range Smooth Finish bricks from Island Block & Paving are a sophisticated choice for your new home. Manufactured with recycled glass aggregates; the Premium Range of Smooth Finish bricks are well-known for their clean lines and consistent, smooth texture. The Smooth Finish bricks have the same surface finish all around the brick which includes very straight distinctive edges.



Pearl ECO



Mist ECO



Platinum ECO



Pewter ECO



Ebony ECO



Storm Grey ECO



Pontville ECO



Walnut ECO





Pewter ECO



Pearl ECO



# PREMIUM EXPOSED

## EXPOSED FINISH

Premium Range Exposed Finish bricks from Island Block & Paving are a distinctively, unique brick which has the natural sand and recycled glass aggregates exposed after manufacture. Our signature shot blasting machine ensures each brick is exposed on one brick face and on one end.



Pearl ECO



Mist ECO



Platinum ECO



Pewter ECO



Ebony ECO



Storm Grey ECO



Pontville ECO



Walnut ECO





Pearl ECO



# PREMIUM REFINED

## REFINED FINISH

Premium Range Refined Finish bricks are the superior brick collection available from Island Block & Paving. The Refined Finish range boasts the highest end of luxury with the mirror like surface finishes achieved through a state of the art "Cassani" grinding and polishing machine. Available in Island Block & Paving's exclusive colour range, the Refined Finish collection epitomises high end, architectural selection.



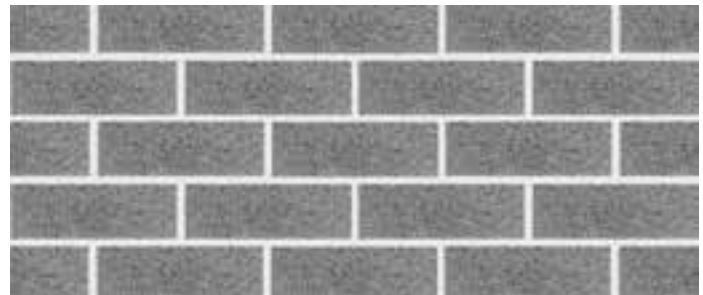
Pearl ECO



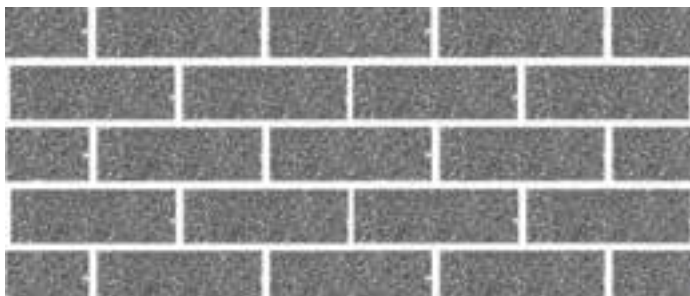
Mist ECO



Platinum ECO



Pewter ECO



Ebony ECO



Storm Grey ECO



Pontville ECO



Walnut ECO



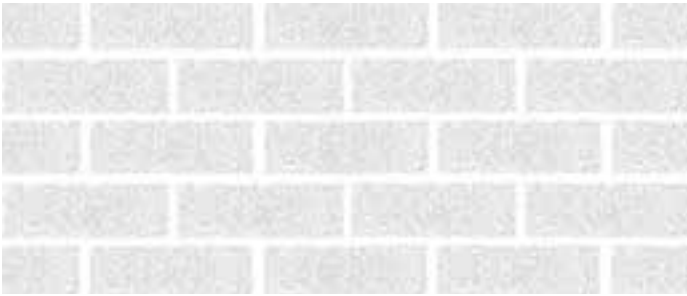
Pure White



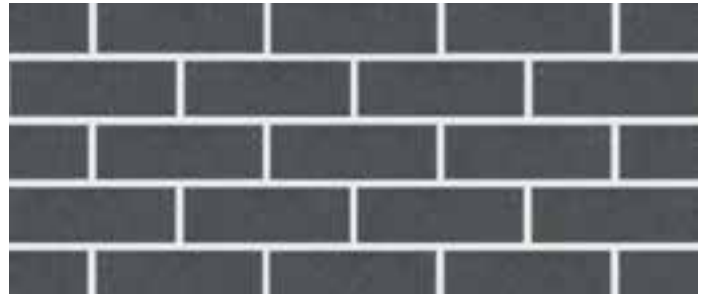
# DESIGNER RANGE

## SMOOTH FINISH

Designer Range Smooth Finish bricks from Island Block & Paving are a sophisticated choice for your new home. Manufactured with natural sand aggregates; the Designer Range of Smooth Finish bricks are well-known for their clean lines and consistent, smooth texture. The Smooth Finish bricks have the same surface finish all around the brick which includes very straight distinctive edges.



Pure White



Graphite



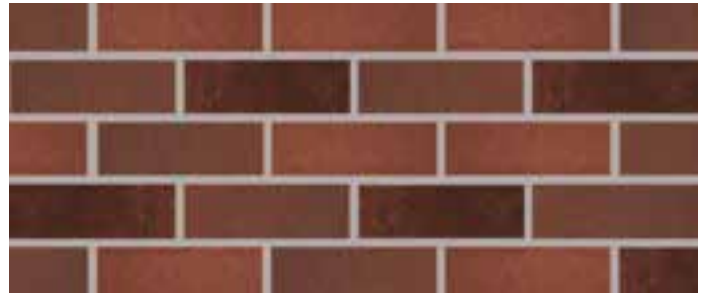
Dune



Limestone



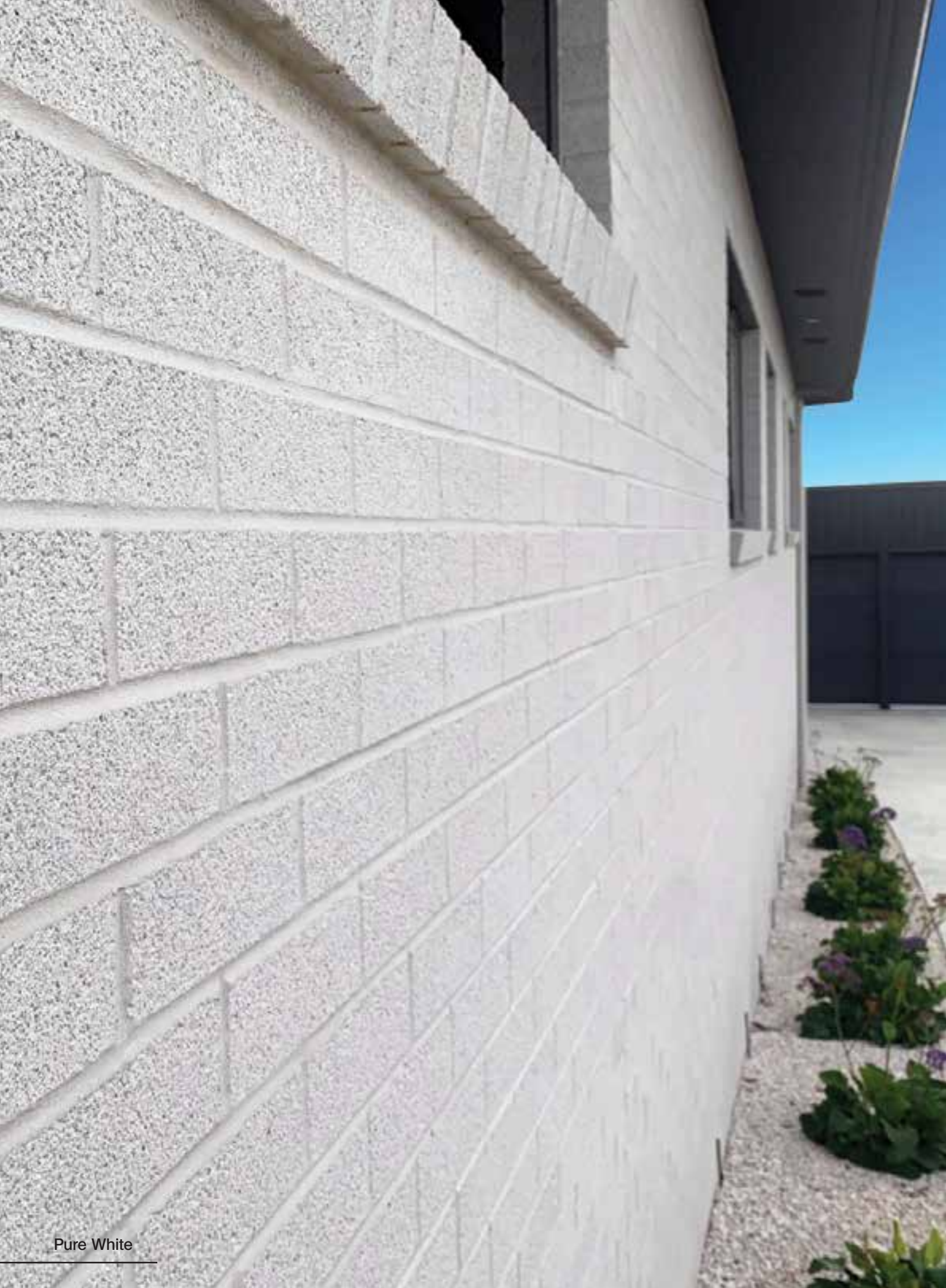
Mocca



Auburn



Graphite



Pure White



# DESIGNER RANGE

## EXPOSED FINISH

Designer Range Exposed Finish bricks from Island Block & Paving are a distinctively, unique brick which has the natural sand aggregates exposed after manufacture. Our signature shot blasting machine ensures each brick is exposed on one brick face and on one end.



Pure White



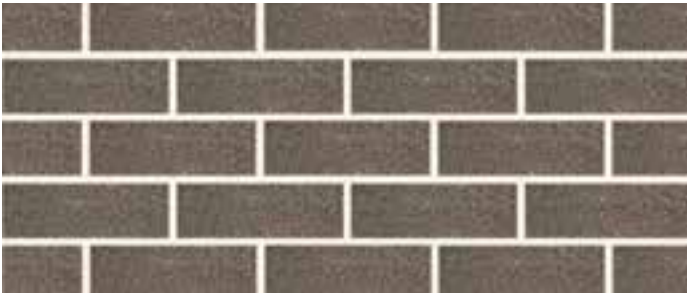
Graphite



Dune



Limestone



Mocca



Auburn



Graphite



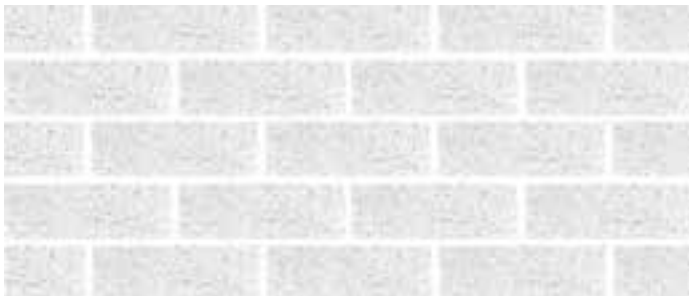
Graphite



# DESIGNER RANGE

## REFINED FINISH

Designer Range Refined Finish bricks are the superior brick collection available from Island Block & Paving. The Refined Finish range boasts the highest end of luxury with the mirror like surface finishes achieved through a state of the art "Cassani" grinding and polishing machine. Available in Island Block & Paving's exclusive colour range, the Refined Finish collection epitomises high end, architectural selection.



Pure White



Graphite



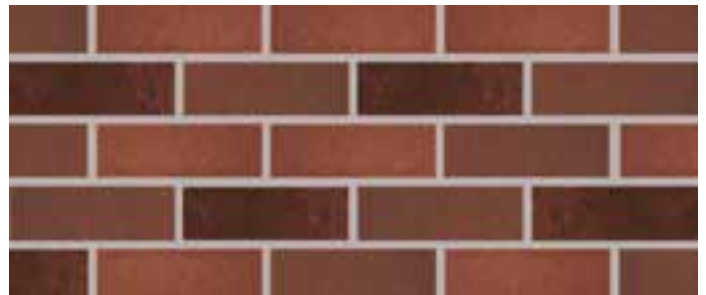
Dune



Limestone



Mocca



Auburn



Pure White

# CUSTOMERS TESTIMONIALS

"I have used the Refined finish Bricks for the Future on a recent project and am very happy with the finished product. It's great for our industry to have a sustainable brick product with new surface textures. The smooth finish makes cleaning easy. A bonus is the environmental and thermal benefits that the bricks provide without paying a price premium. I'm more than happy to recommend this locally made product to my customers".

**Simon Direen – Direen Homes (27 years HIA member).**

"Bricks for the Future are an ideal choice when choosing face bricks. The contemporary look created by the unique coloured aggregates and surface finishes are a breath of fresh air to the housing market. The white bricks are the whitest I've ever worked with. My bricklayer likes working with them and importantly my clients end up with an exclusive finish."

**Pino Tedeschi – Tedeschi Builders (25 years HIA member)**

"Bricks for the Future are my preferred type of bricks to lay. I prefer them over clay types as they are dimensionally very accurate, no size variation which helps me save time and get the best result for my customers. The sustainable aspect is great as the engineered glass sand provides nice surface finishes in modern colours. I find cleaning easy, basically I lay them clean and high-pressure wash after 7 days mortar curing. Great products."

**Greg Longmore – Longmore Bricklaying (20 years' experience)**

## TECHNICAL DATA

**Brick Dimensions:** 230mm Long x 110mm Wide x 76mm High

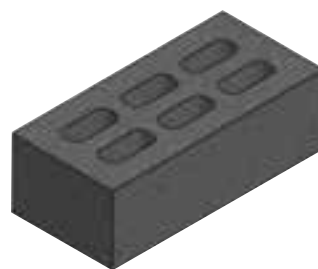
**Working Dimensions:** AS 455.1 2008: + or - 2mm Dimensional Tolerance

**Recommended Mortar per AS2758.1:** 1GP Cement + 1 Lime + 6 Clean Sand

**Unconfined Compressive Strength:** > 15 MPa

**Material Density:** 2150 Kg/m<sup>3</sup>

**Average Dry Mass:** 3160 g, 3.16kg each



**Fire rating:** FRL Integrity/Insulation 120 mins. Deemed to comply as non-combustible for Bushfire prone areas, designed with accordance to AS 3959 as applicable under the NCC 2019 Part G5.1:

**Exposure Grade & Salt Attack Resistant:** Suitable for severe marine environment- less susceptible for salt attack. Severe marine environments- defined as within 1 km of a surf coast or up to 100 metres from a non-surf coast in accordance with AS/ NZS 4456.10

## CONTACTS

### ISLAND BLOCK & PAVING

16525 Midland Highway,  
Breadalbane,  
Tasmania, 7300

### ISLAND BLOCK & PAVING

41 Howard Road,  
Glenorchy,  
Tasmania, 7010

### ISLAND BLOCK & PAVING

8 Metrolink Cct,  
Campbellfield,  
Victoria 3061

### ISLAND BLOCK & PAVING

24/7 Display Only  
16 River Road,  
Wivenhoe, Tasmania 7320

**TASMANIA**

**VICTORIA**

**SOUTH AUSTRALIA**

**NEW SOUTH WALES**

**QUEENSLAND**

**DISTRIBUTOR LIST:** [islandblock.com.au/distributors](http://islandblock.com.au/distributors)



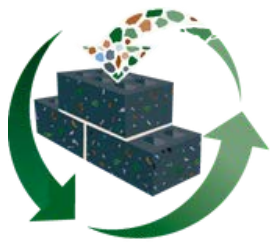
**FREECALL 1800 004 499**

email: [sales@islandblock.com.au](mailto:sales@islandblock.com.au)  
**[islandblock.com.au](http://islandblock.com.au)**

*"No one knows Blocks and Pavers better"*



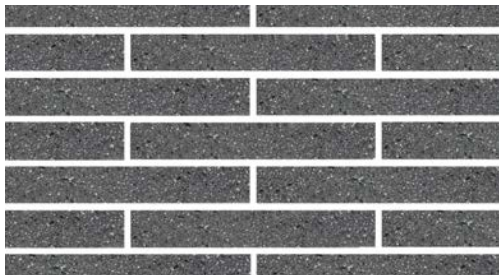




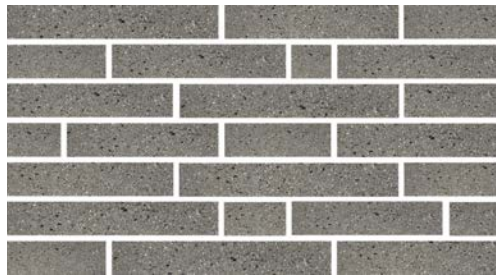
# BRICKS *for the* FUTURE

## *Bespoke Range*

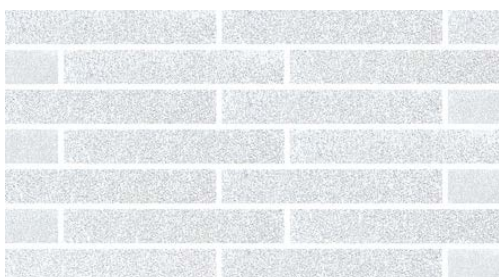
The custom made, elongated Bespoke Brick collection is provided for the architecturally inspired aiming to make a design statement with long format bricks. Made in Australia, the Bespoke range provides a sustainably certified, high-end brick suitable for luxury builds. The long bricks are crafted exclusively to the architect's project requirements.



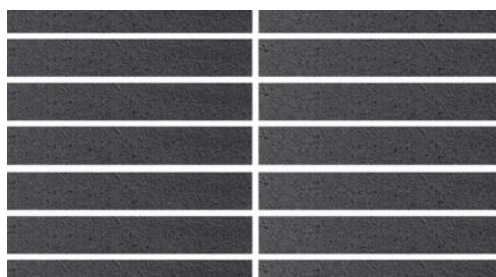
Stretcher Bond: Ebony ECO Refined



Random Bond: Pewter ECO Refined



Offset Bond: Pure White Refined



Stack Bond: Graphite Smooth

- Greentag certified
- Custom made finishes
- Latest colour trends
- Dimensionally accurate
- 100% colourfast





## BESPOKE COLOURS



Pure White



Pearl ECO



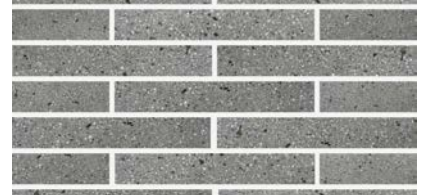
Mist ECO



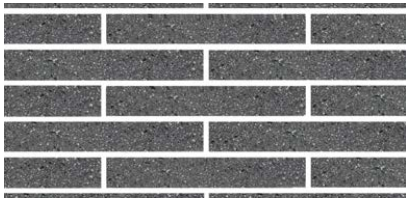
Whisper White ECO



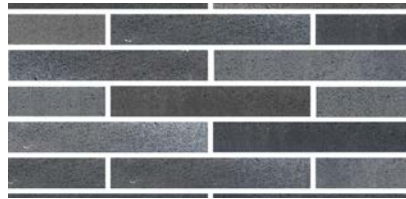
Platinum ECO



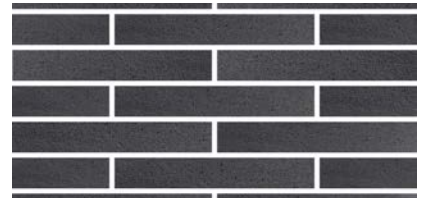
Pewter ECO



Ebony ECO



Storm Grey ECO



Graphite

9 standard colours, available in a Smooth, Exposed or Refined Finish. Custom made colours can be manufactured to order.

**Brick Dimensions:** 390mm Long x 110mm Wide x 60mm High (36 per m2)

**Working Dimensions:** AS 4455.1 2008: + or - 2mm Dimensional Tolerance

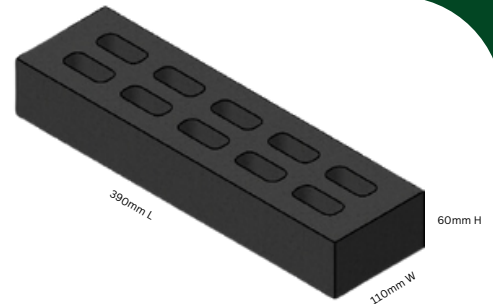
**Recommended Mortar per AS 3700:** 1 GP Cement + 1 Lime + 6 Clean Sand

**Unconfined Compressive Strength:** > 15 MPa

**Material Density:** 2150 Kg/m3

**Average Dry Mass:** 4200 g, 4.2kg each

**No. Per Pallet:** 450



**Fire rating:** FRL Integrity/Insulation 120 mins. Deemed to comply as non-combustible for Bushfire prone areas, designed with accordance to AS3959 as applicable under the NCC 2019 Part G5.1:

**Exposure Grade & Salt Attack Resistant:** Suitable for severe marine environment- less susceptible for salt attack. Severe marine environments- defined as within 1 km of a surf coast or up to 100 metres from a non-surf coast in accordance with AS/ NZS 4456.10

## CONTACTS

**ISLAND BLOCK & PAVING**  
16525 Midland Highway,  
Breadalbane,  
Tasmania 7300

**ISLAND BLOCK & PAVING**  
41 Howard Road,  
Glenorchy,  
Tasmania 7010

**ISLAND BLOCK & PAVING**  
8 Metrolink Circuit,  
Campbellfield,  
Victoria 3061

**ISLAND BLOCK & PAVING**  
24/7 Display Only  
16 River Road, Burnie  
Tasmania 7320

TASMANIA

VICTORIA

SOUTH AUSTRALIA

NEW SOUTH WALES

**DISTRIBUTOR LIST:** [islandblock.com.au/distributors](http://islandblock.com.au/distributors)



**FREECALL 1800 004 499**

Email: [sales@islandblock.com.au](mailto:sales@islandblock.com.au)

**[islandblock.com.au](http://islandblock.com.au)**

*"No one knows Blocks & Pavers better"*

