



# **BRICKS** *for the* **FUTURE**

*Reclaimed Bricks*

The Reclaimed Brick collection encompass the charm and rustic appeal of recycled bricks. Every reclaimed brick has its own unique surface texture, suitable for both traditional or luxury builds. Made in Australia, the Reclaimed bricks are crafted with 40% recycled content which result in sustainably certified reclaimed bricks which provide yesterday's look today.



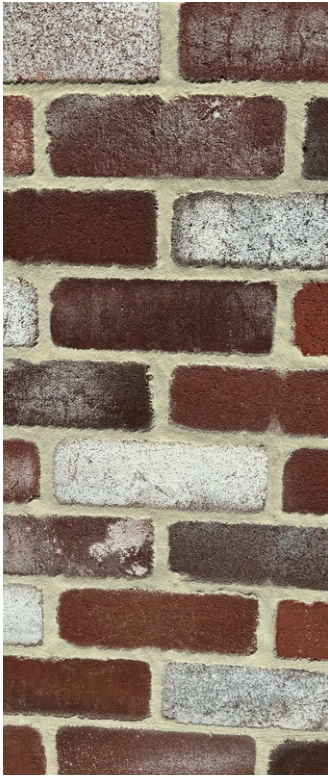
- Greentag certified
- Australian made
- Recycled brick colours
- 100% colourfast
- Exposure grade



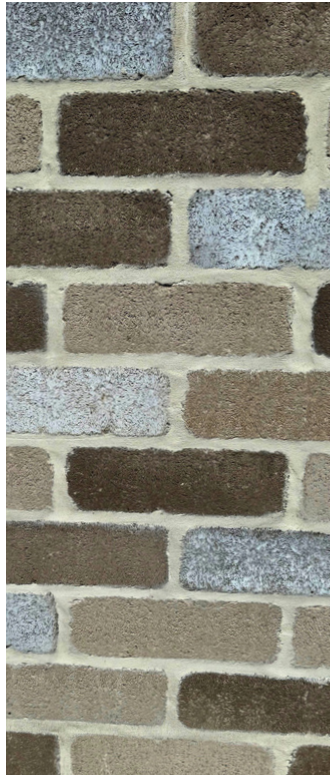
[islandblock.com.au](http://islandblock.com.au)



# RECLAIMED BRICKS



Reclaimed Red



Reclaimed Buff

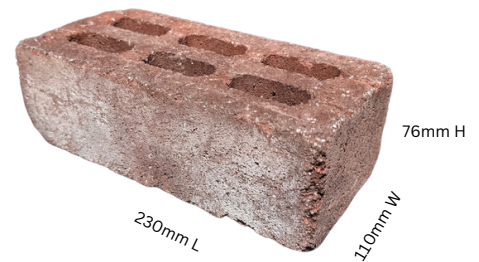


Reclaimed Limewash



Reclaimed Grey

**Brick Dimensions:** 230mm Long x 110mm Wide x 76mm High (50 per m<sup>2</sup>)  
**Working Dimensions:** AS 4455.1 2008; + or - 2mm Dimensional Tolerance  
**Recommended Mortar per AS 3700:** 1GP Cement + 1 Lime + 6 Clean Sand  
**Unconfined Compressive Strength:** > 15 MPa  
**Material Density:** 2150 Kg/m<sup>3</sup>  
**Average Dry Mass:** 3100 g, 3.1kg each  
**No. Per Pallet:** 500



**Fire rating:** FRL Integrity/Insulation 120 mins. Deemed to comply as non-combustible for Bushfire prone areas, designed with accordance to AS3959 as applicable under the NCC 2019 Part G5.1:

**Exposure Grade & Salt Attack Resistant:** Suitable for severe marine environment- less susceptible for salt attack. Severe marine environments- defined as within 1 km of a surf coast or up to 100 metres from a non-surf coast in accordance with AS/ NZS 4456.10

## CONTACTS

**ISLAND BLOCK & PAVING**  
 16525 Midland Highway,  
 Breadalbane,  
 Tasmania 7300

**ISLAND BLOCK & PAVING**  
 41 Howard Road,  
 Glenorchy,  
 Tasmania 7010

**ISLAND BLOCK & PAVING**  
 8 Metrolink Circuit,  
 Campbellfield,  
 Victoria 3061

**ISLAND BLOCK & PAVING**  
 24/7 Display Only  
 16 River Road, Burnie  
 Tasmania 7320

**TASMANIA**

**VICTORIA**

**SOUTH AUSTRALIA**

**NEW SOUTH WALES**

**DISTRIBUTOR LIST:** [islandblock.com.au/distributors](http://islandblock.com.au/distributors)

**FREECALL 1800 004 499**

Email: [sales@islandblock.com.au](mailto:sales@islandblock.com.au)

[islandblock.com.au](http://islandblock.com.au)

*"No one knows Bricks, Blocks & Pavers better"*

