



# BRICKS *for the* FUTURE

*25mm thick Brick Slips*



Australia's only Carbon Neutral Brick Slips deliver premium design with purpose. These 25mm brick slips are crafted from high-quality engineered sand, incorporating processed recycled glass aggregates—offering a sustainable solution without compromising on style or performance.





Australia's only Carbon Neutral certified range of manufactured 25mm thick Brick Slips, also known as brick facings. The thin Brick Slips allow specifiers to achieve carbon neutral, lightweight brick walling and flooring projects in on trend colour tones.

Providing the durability and aesthetics of bricks, with the added advantage of light weight installation.

The Brick Slips range includes manufactured corner bricks.

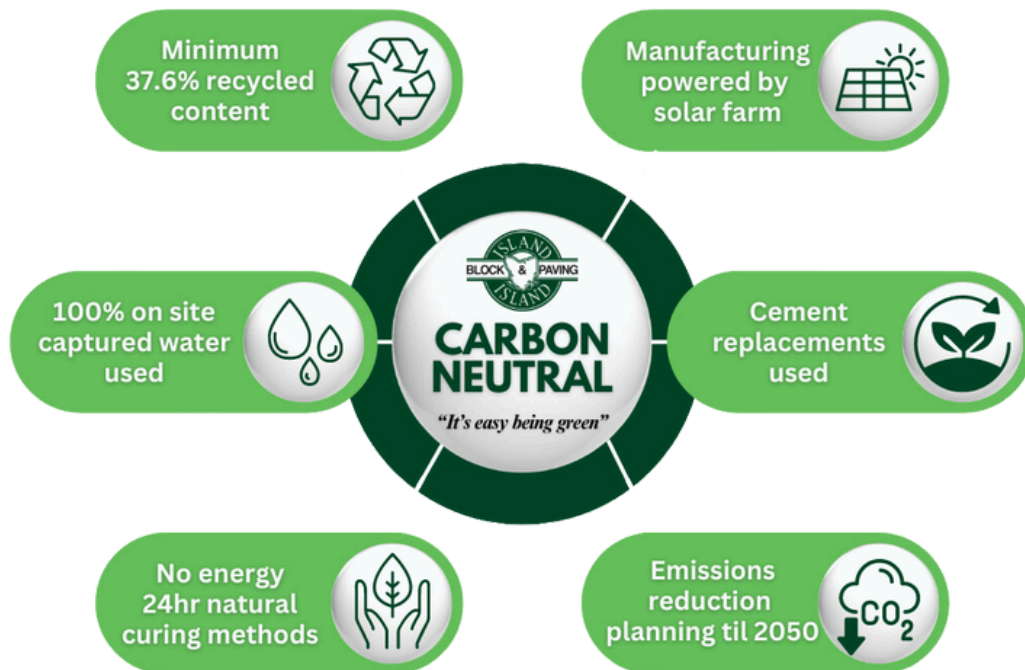
No saw cutting is required, therefore nil waste generation and no safety risks with silica dust.

The result is much lower carbon emissions at cost effective pricing.

Available in various surface finishes, the slips are made with water repellent inhibitors and are guaranteed to be dimensionally accurate. The sustainable masonry cladding alternative for single or multi-story construction, feature walls and floor paving.



## How are we Carbon Neutral Certified?



## Why Choose Our Products?

### Certification:

- Global GreenTag International EN 15804 EPD, Environmental Product Declaration.
- Carbon Zero rating under CarbonRATE™ certification scheme.
- GreenRate Level A certified, Best Practice product in Greenstar rating system.
- Product Health Declaration Platinum level, No VOC's.

### Architects and Specifiers:

- 25mm manufactured Brick Slips exceed the expectations of environmentally conscious specifiers.
- Third-party audits from Global GreenTag Australia ensure credibility and no greenwashing.
- Carbon Neutral verified, no "opt in" carbon offset scheme requirements.



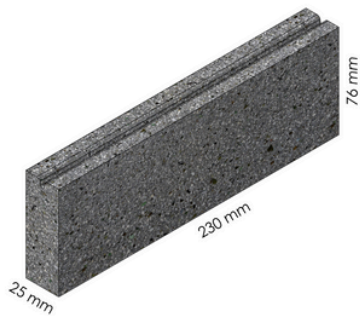


# PRODUCT FEATURES

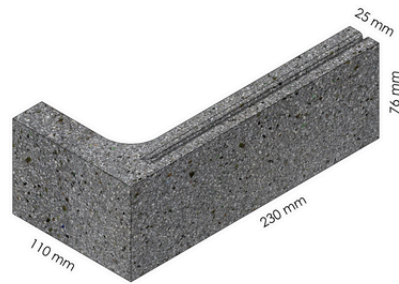
- Carbon Neutral
- Surface finishes that softly glisten
- Stain Resistant
- CSIRO tested as water repellent
- Exposure Grade Tested AS 4456.1
- Salt Attack Resistant
- Whitest colour available in Australia
- Dimensionally Accurate



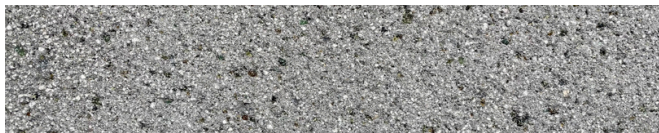
## BRICK SLIP



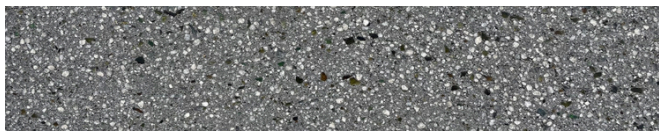
## CORNER BRICK SLIPS



**Smooth Coloured Finish:** The Smooth Finish surface offers a smooth, consistent texture with feature aggregates and distinctive edges.



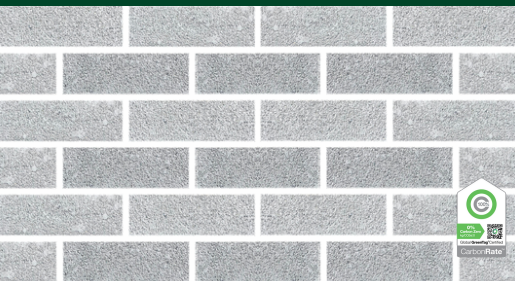
**Exposed Coloured Finish:** The Exposed aggregate surface finish is achieved through our signature shot blasting machine.



**Refined Coloured Finish:** The Refined surface finishes offers mirror like surface finishes achieved by a state-of-the-art polishing machine.

**Reclaimed Finish** options are also available. Enquire for more information.

# COLOURS AVAILABLE



Ash ECO



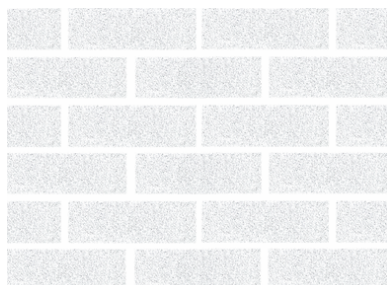
Almond ECO



Auburn ECO



Pearl ECO



Pure White



Storm Grey ECO



Whisper White ECO



# PERFORMANCE

## Manufacturing

Island Block & Paving manufactures all Carbon Neutral verified Brick Slip products satisfying the requirements of the Australian and New Zealand Standard, AS/NZS 4455 – Masonry units, pavers, flags and segment retaining wall units. Products are tested to the Australian and New Zealand Standard AS/NZS 4456 – Masonry Units, Segmental Pavers and flags – Methods of Test and meet the requirements of AS 3700. Quality Masonry System to ISO 9001:2015.

## Water Resistance

To prevent staining, maintenance and water ingress it is important that any Brick Slip specified have excellent water-resistant properties. The 25mm Brick Slips range lead the brick facing market for water absorption with a tested (CWA) cold water absorption rate of less than 3%. Manufactured with Tech Dry water repellent additives blended in manufacturing; a water repellent mortar additive is also available, resulting in CSIRO tested walls that are deemed to be water repellent in wind driven rain. In comparison sawcut clay brick alternatives report CWA levels of between 7% and 15%.

## Fire Resistance

The fire performance of walling and floor materials must comply with minimum requirements set out in the National Construction Code (NCC / BCA). Brick Slips are recognised as a non-combustible material under the NCC 2022, automatically satisfying the C1.9 requirements for Non-combustible construction. Compliance in bushfire prone areas to BAL-40.

## Acoustic

The heavy mass of the 25mm thick Brick Slips add extra acoustic insulation to walls or floors when compared to lightweight cladding alternatives.

## Slip Resistance

Brick Slips laid as paving or flooring are slip resistant and compliant with AS/NZS 4586 - Slip resistance classification of new pedestrian surface materials, testing results in a P5 slip resistance rating on all surface finishes.



Pearl ECO Smooth



# BRICK SLIP CONSTRUCTION METHODS

There are four main construction methods for brick clad walls or floors, using 25mm thick Brick Slips/Brick Facings. All four methods involve using either adhesive or mechanical engagement to a substrate. Each method has its own benefits and is suited to different applications....

- 1. Adhered Brick Slips/Facings:** The brick slips/facings are glued onto a flat wall substrate, typically cement sheet/blockwork/concrete, using an approved adhesive.
- 2. Rail System:** Single-course mechanical engagements that utilise a continuous rail for each brick course. Island Block & Paving recommend the Empire Brick Rail System.
- 3. Precast Concrete Brick Slip System:** Known as “inlay systems,” concrete precast panels are poured with the 25mm thick Brick Slips cast into them prior to the concrete pour.
- 4. Floor Paving System:** 25mm thick Brick Slip pavers or tiles, are ideal for a durable nonslip paving/floor option. Typically laid with a 10mm joint. P5 Slip Resistant Rated.





# BRICK SLIP CONSTRUCTION METHODS

**1. Adhered Brick Slips/Facings:** Adhered 25mm thick Brick Slips are easy to apply and ideal for interior feature walls or low height applications. An adhesive for the bricks is applied to the back of the bricks using a 10mm notched trowel. Adhered brick slip facings can be laid in any pattern and orientation. The Adhered Brick Slip method should be limited to walls less than one storey above ground level; it is recommended that the mechanically engaged brick Rail System is used in applications that exceed this height. Brick Slips should not be adhered to plasterboard. Mapei “Keraflex” adhesive is recommended.



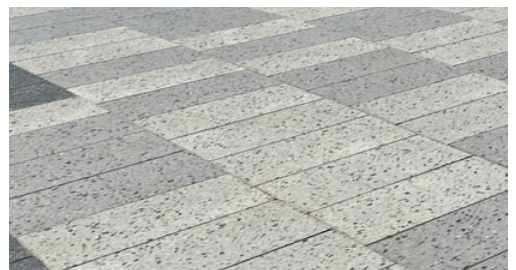
**2. Rail System:** The Rail System consists of rebated 25mm thick Brick Slips (or brick facings, brick snaps) which slip or click into a specifically engineered steel rail. Successive courses are built by interlocking rails vertically, or spacing rails a specified distance apart and fixing them onto a vertical support system which incorporates a cavity for ventilation and drainage. These rails can be installed directly to a substrate for internal applications. Mortar is then pointed into the joints between the bricks to enhance the bond between the bricks and rails to give an authentic brick wall façade. The Empire Brick Rail System is recommended.



**3. Precast Concrete Brick Slip System:** 25mm Brick Slips can be cast into Precast concrete panels to act as a 2-dimensional modular walling system for more efficient on-site construction. Suitable for multi storey commercial developments inlay systems using 25mm Carbon Neutral Brick Slips provide sustainable project benefits whilst providing the incredible aesthetic of high-end masonry. As the manufacture of these panels is done off-site, specifications for these systems are not included.



**4. Floor Paving System:** 25mm thick Brick Slips when laid as flooring or paving, are Carbon Neutral and a durable floor finish option for either internal or external floors/pavements. The Brick Slips when laid as flooring is suitable for pedestrian traffic and must be bonded by suitable adhesive over a concrete base. Grout or mortar joints should be a minimum of 5mm and a maximum of 10mm wide to AS 3958.1 and AS 3958.2. Mapei “Keraflex” adhesive is recommended.



**Note:** Design parameters vary, we recommend consulting project designers, rail, sealant and adhesive manufacturers for recommendations to suit the requirements of each project.

Carbon Neutral Brick Slips are manufactured with Tech Dry water repellent emulsion. This provides water resistant products that are stain resistant, colourfast and prevents efflorescence. These are important properties for exterior products exposed to Australian weather conditions.

A water repellent mortar additive along with CSIRO testing is available.



# TECHNICAL SUPPORT

Established in 1993, Island Block & Paving have over 30 years experience in sustainable masonry manufacturing. We pride ourselves in supporting designers with technical information to support their masonry designs. We have our own experienced team and are 30-year members of the CMAA. We welcome your enquiries.



**We are here to help...ask us**

- GBCA Greenstar compliance
- Masonry design advice
- Engineering advice



**Adhered Brick Slips: Mapei Fixing Guide**



**Rail Systems: Empire Brick Technical Manual**



**Mortar, Control Joints - CMAA Extracts**



**Cleaning Guide- CMAA Cleaning Manual**







# BRICKS *for the* FUTURE

25mm thick Brick Slips

## Technical Information

Brick Slip Sizes- 230mm L x 25mm W x 76mm High

No. per M2- 48.5

Weight each- 0.95 kg

No. per pallet-1050 weighing 1000 kgs

Packaging- For ease of onsite handling. Sold in packs of 21 bricks. 50 x 21 packs = 1050 per pallet

Working Dimensions: AS 4455.1 2008: + or - 2mm Dimensional Tolerance

Recommended Mortar per AS 3700: M3 or M4 mortar with TechDryad mortar additive, ironed or rolled joints recommended.

Unconfined Compressive Strength: > 15 MPa

Material Density: Average Dry Mass: 2150 Kg/m<sup>3</sup>

Fire rating: Deemed to comply as non-combustible for Bushfire prone areas, designed in accordance to AS3959 as applicable under the NCC 2020 satisfying C1.9 in bushfire prone areas to BAL-40.

Exposure Grade & Salt Attack Resistant: Suitable for severe marine environment- less susceptible for salt attack. Severe marine environments- defined as within 1 km of a surf coast or up to 100 metres from a non-surf coast in accordance with AS/ NZS 4456.10

CWA - Cold Water Absorption < 3%: deemed water repellent in wind driven rain (using TechDryad water repellent mortar additive)

LRV - Light Reflectance Values: view Bricks for the Future LRV's at [islandblock.com.au/LRV](http://islandblock.com.au/LRV)

SRI - Solar Reflectance Index: view Bricks for the Future SRI at [islandblock.com.au/SRI](http://islandblock.com.au/SRI)

Certification - Carbon Neutral & Global GreenTag Third Party Verified certificates to view at [islandblock.com.au](http://islandblock.com.au)



## CONTACTS

**ISLAND BLOCK & PAVING**  
16525 Midland Highway,  
Breadalbane,  
Tasmania 7300

**ISLAND BLOCK & PAVING**  
41 Howard Road,  
Glenorchy,  
Tasmania 7010

**ISLAND BLOCK & PAVING**  
8 Metrolink Circuit,  
Campbellfield,  
Victoria 3061

**ISLAND BLOCK & PAVING**  
40 Eddie Road,  
Minchinbury,  
New South Wales 2770

**TASMANIA**

**VICTORIA**

**SOUTH AUSTRALIA**

**NEW SOUTH WALES**



**FREECALL 1800 004 499**

Email: [sales@islandblock.com.au](mailto:sales@islandblock.com.au)

[islandblock.com.au](http://islandblock.com.au)

*"No one knows Bricks, Blocks & Pavers better"*

