



# DIY WALL BLOCKS

*"No mortar, no fuss"*



- DO IT YOURSELF
- BUILD YOUR OWN WALLS
- SUSTAINABLE CONCRETE BLOCK OPTION
- SELF LOCATING, LIKE LEGO BLOCKS
- LIGHTWEIGHT
- SAVE TIME & \$\$\$

Lightweight Natural

Design Registration: 2021 15060



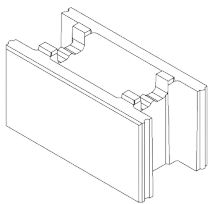
[islandblock.com.au](http://islandblock.com.au)



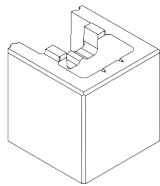
Do it yourself concrete blocks provide a lightweight, mortarless block, for unskilled labour to build their own concrete block walls. Each DIY wall block has patented connecting lugs which automatically connect to the adjoining blocks when laid.

The 400mm L x 200mm W x 200mm H, DIY wall blocks can incorporate C section fence posts, Colorbond panel fences and balustrades within the blocks, ensuring that all available space is utilized by not having to fix any boundary posts behind the wall. With recycled aggregates and Greentag certification, DIY blocks tick the boxes as an environmentally responsible DIY alternative to concrete block walls.

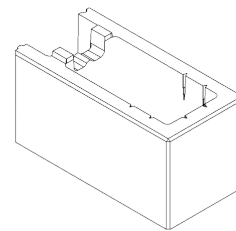
## AVAILABLE BLOCK TYPES



**Full Block**  
400L x 200W x 200H  
12kg each  
90 per pallet



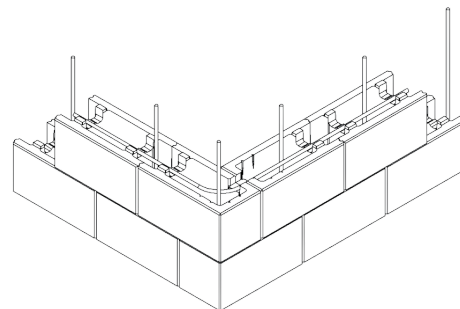
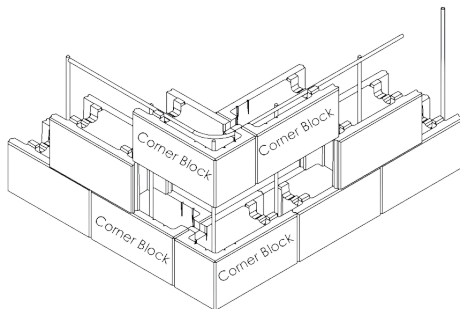
**Half Block**  
200L x 200W x 200H  
7.80kg each  
180 per pallet



**Corner Block**  
400L x 200W x 200H  
12.80kg each  
90 per pallet

Capping 390L x 190W x 40H

## CORNER DETAIL



**AVAILABLE COLOURS:** Natural Lightweight, Ebony ECO, Mist ECO

## TECHNICAL DATA

Working Dimensions AS 4455.1 2008: + or - 2mm  
Unconfined Compressive Strength: >15 Mpa  
Material Density: Average Dry Mass: <1800kg/m<sup>3</sup>  
F.R.L. (Fire): Structural Adequacy / Insulation / Integrity: -/240/240 Core filled  
Weight per lightweight block: 12 kg each  
\* Deemed to comply with AS3700 per CMAA MA55 design manual

## ESTIMATING DATA

12.5 Blocks Per M2  
1 m3 of core fill to 125 Blocks  
1 m3 of core fill to 10 M2 Blocks  
1 x 300 grams adhesive adheres 20 Blocks  
90 x Blocks per pallet  
83 Blocks per tonne

## INSTALLATION



DIY INSTALLATION VIDEO



DIY INSTALLATION GUIDE



**AVAILABLE FROM**

**islandblock.com.au**

**FREECALL 1800 004 499**

Email: [sales@islandblock.com.au](mailto:sales@islandblock.com.au)

*"No one knows Bricks, Blocks & Pavers better"*

