



# PAVERS *for the* FUTURE

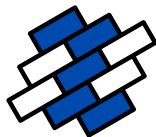
## RESIDENTIAL RANGE



[islandblock.com.au](http://islandblock.com.au)

# THE PAVING STORY

Pavers for the Future, from Island Block & Paving are Australia's only Carbon Neutral Certified Paving range. Offering a durable, premium quality paving collection, specifically designed for residential spaces, perfect for driveways, patios, and outdoor entertaining areas. Carbon Neutral with Global Greentag Certification, Pavers for the Future are an environmentally responsible product with many benefits. Pavers for the Future are low maintenance, stain resistant, slip resistant, have a variety of unique surface finish options and are manufactured to strict dimensional tolerances meaning size variations causing potential trip hazards are not a factor.



**COLOURS AND STYLE:** Pavers for the Future offer a vast range of colours. Surface finishes include polished, exposed and standard finishes. Pavers for the Future are colour-fast, the colour is blended throughout the paver, not a surface coatings that can chip off.



**LOW MAINTENANCE:** Pavers for the Future require minimal maintenance to keep them looking pristine and are manufactured with surface densifiers to achieve a non-slip easy to clean surface. Pavers are easy to replace and/or lift to access underground services.



**ROBUST:** Pavers for the Future are very strong and easily exceed minimum test requirements. Their strength and durable surface is perfect for high use municipal or commercial areas.



**AFFORDABLE:** Pavers for the Future, despite their unique high end finish, are very price competitive. Designers can also obtain technical assistance from Island Block & Paving's experienced team who have resources such as the CMAA engineers to assist.



**TESTING:** Pavers for the Future testing exceeds the requirements of AS/NZS 4455 and CMAA design requirements. Test results are listed below and are available on request.



**SUSTAINABILITY:** Pavers for the Future Carbon Neutral and Global Greentag Level A Certified. Recycled aggregates are used meaning landfill is reduced, low embodied energy due to modern natural curing methods and 100% captured water is used. View the certification at [islandblock.com.au](http://islandblock.com.au).

## PRODUCT TYPES



Suitable for **Pedestrian** use only.



Suitable for **Domestic** Vehicles.



Suitable for **Commercial** Vehicles.

## AVAILABLE FINISHES

### SMOOTH FINISH

A sophisticated selection for your new home, with straight edges and a even surface, the Smooth Surface Finish is a sleek choice.

### EXPOSED FINISH

Exposed after manufacture to provide a high-end finish, the signature shot blasting machine ensures each brick is exposed on one brick face & on one end to expose the aggregates within.

### REFINED FINISH

The superior collection, the Refined Finish range boasts the highest end of luxury with the mirror like surface finishes achieved through a state of the art grinding and polishing machine.

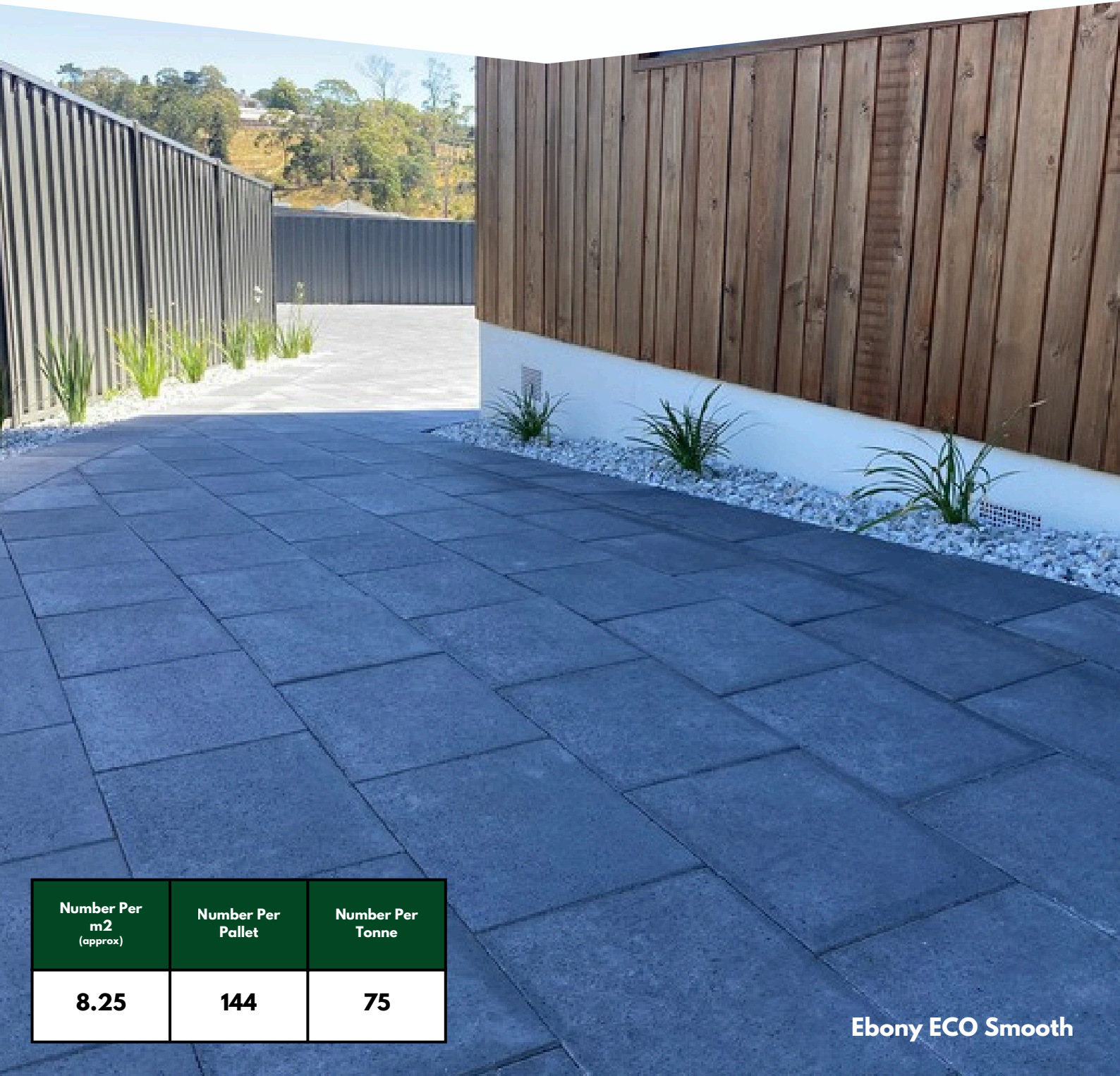


# CLASSIC STONE 400x300x50mm

Smooth Finish



The Classic Stone paver offers exceptional versatility, making it ideal for a variety of applications. Available in an extensive range of colors this paver is perfect for paths, patios, entertainment areas, pool surrounds, and more.



Number Per m <sup>2</sup> (approx)	Number Per Pallet	Number Per Tonne
8.25	144	75

**Ebony ECO Smooth**



Ebony ECO



Mist ECO



Limestone





# CLASSIC STONE 400x300x50mm

Exposed Finish



The Classic Stone paver offers exceptional versatility, making it ideal for a variety of applications. Available in an extensive range of colors & surface finishes, this paver is perfect for paths, patios, entertainment areas, pool surrounds, and more.

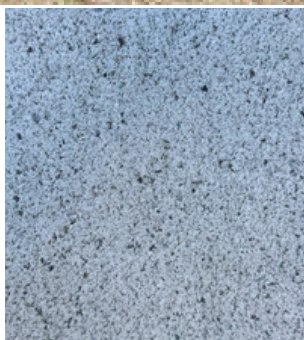


**Limestone Exposed**

Number Per m2 (approx)	Number Per Pallet	Number Per Tonne
8.25	144	75



Ebony ECO



Mist ECO



Limestone



Ebony Pebble



Mist Pebble





# CLASSIC STONE 400x300x50mm

Refined Finish



The Classic Stone paver offers exceptional versatility, making it ideal for a variety of applications. Available in an extensive range of colors & surface finishes, this paver is perfect for paths, patios, entertainment areas, pool surrounds, and more.



**Mist Pebble Refined**

Number Per m <sup>2</sup> (approx)	Number Per Pallet	Number Per Tonne
8.25	144	75



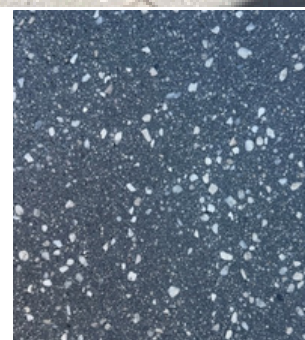
Ebony ECO



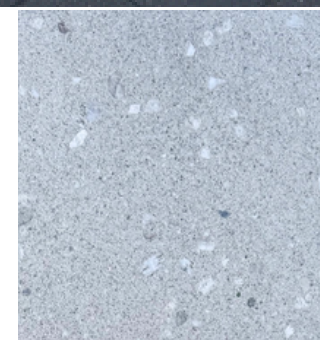
Mist ECO



Limestone



Ebony Pebble



Mist Pebble





# DRIVESTONE 400x300x65mm

Smooth & Exposed Finish



The 65mm thick Drivestone driveway pavers are the perfect choice for high-quality residential driveways. Part of the Carbon Neutral certified collection, the Drivestone range is made with eco-friendly recycled glass sand.



Number Per m2 (approx)	Number Per Pallet	Number Per Tonne
8.25	120	65

Ebony Pebble Exposed

Smooth



Ebony ECO

Exposed



Ebony Pebble

Ebony ECO

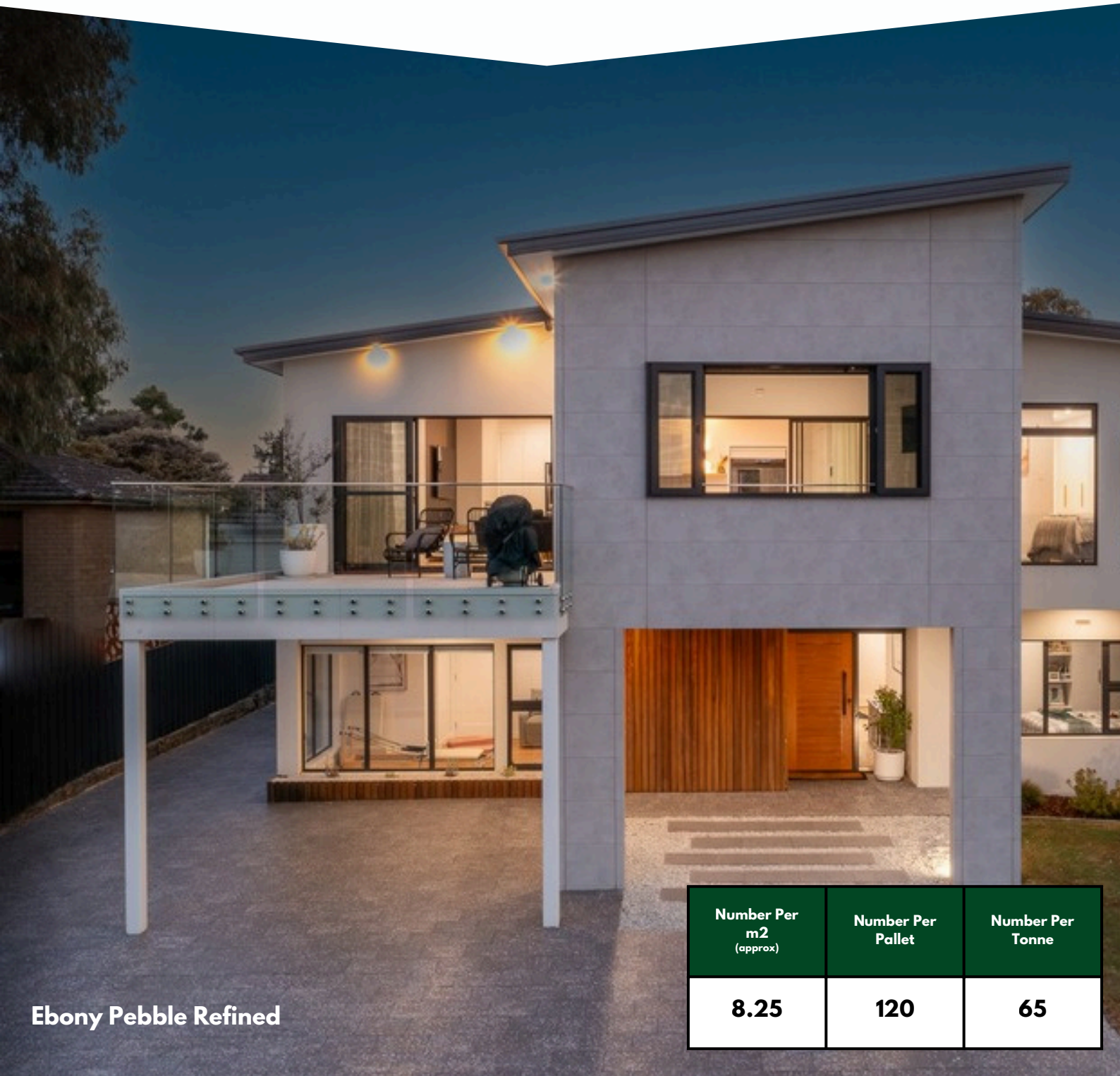


# **DRIVESTONE 400x300x65mm**

Refined Finish



The 65mm thick Drivestone driveway pavers are the perfect choice for high-quality residential driveways. Part of the Carbon Neutral certified collection, the Drivestone range is made with eco-friendly recycled glass sand.

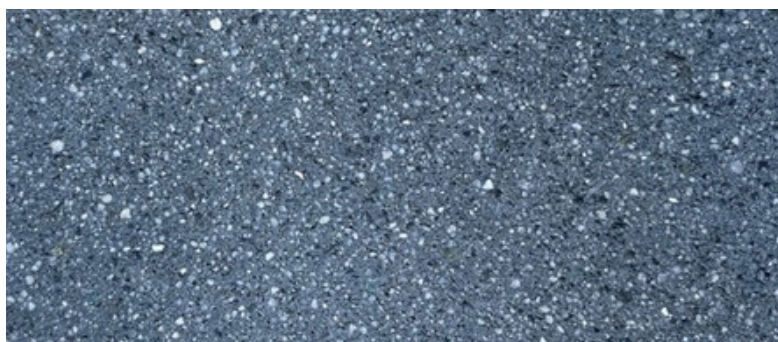


**Ebony Pebble Refined**

Number Per m <sup>2</sup> (approx)	Number Per Pallet	Number Per Tonne
8.25	120	65



Ebony Pebble

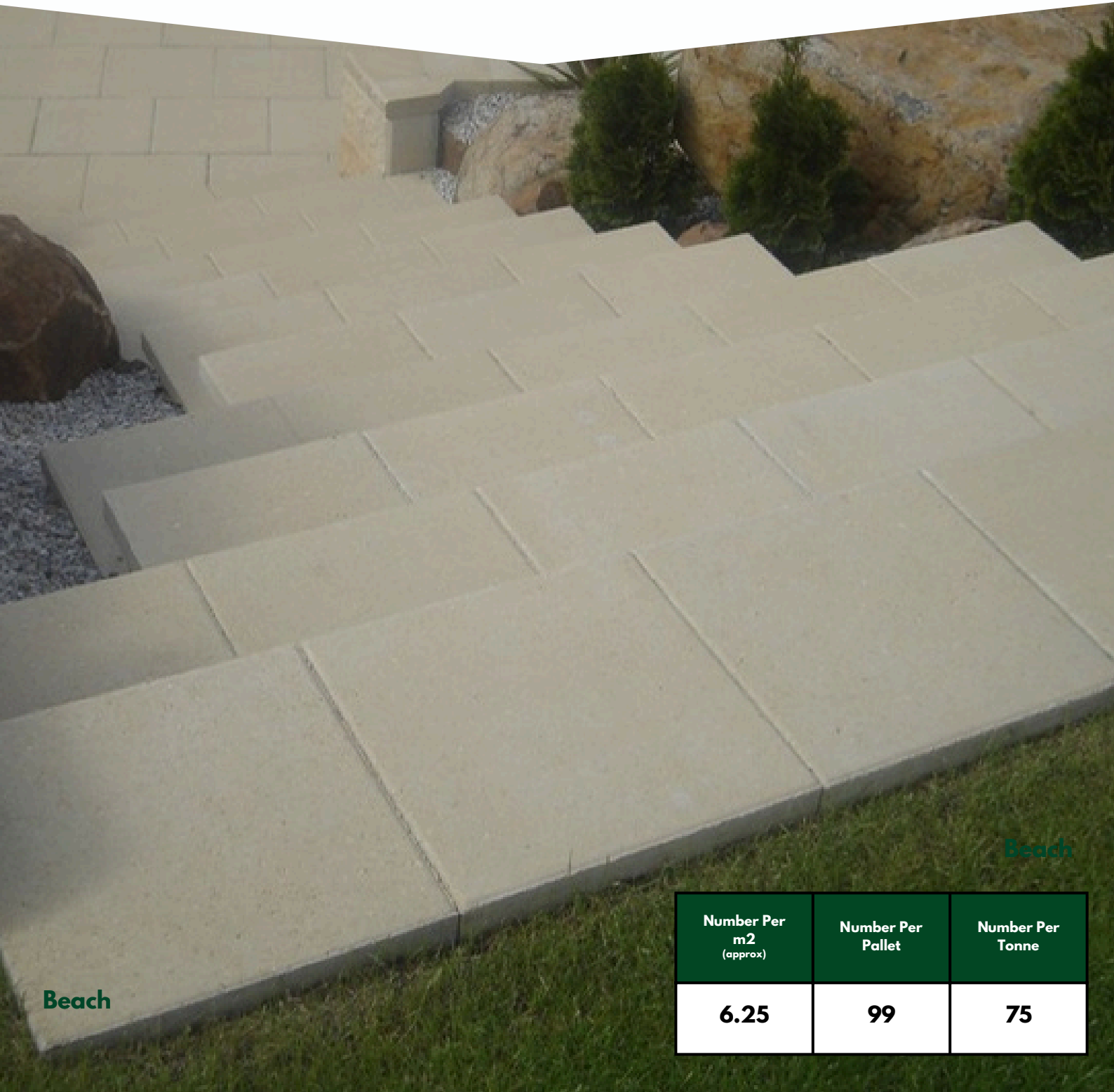


Ebony ECO



# **PLAZA STONE 400x400x50mm**

Plaza Stone pavers feature a large-format, smooth finish and come in a variety of colors. They are the perfect option for creating stylish paths, patio areas, and stepping stones.



Number Per m2 (approx)	Number Per Pallet	Number Per Tonne
6.25	99	75



Beach



Bluestone



Mist

# STONEWARE 600x600x20mm

Stoneware Large Format Pavers offer the ideal low-maintenance solution for those who appreciate the beauty of natural stone. Strong and durable, Stoneware is the perfect choice for your next project.



Number Per m2 (approx)	Number Per Pallet	Number Per Tonne
2.78	96	72

Tumby Grey



Robe Limestone



Stone Graphite



Tumby Grey





# KERBS & EDGING

EDGE STONE 250x100x60mm  
Colours Available: Bluestone, Limestone, Mist



Number Per m2 (approx)	Number Per Pallet	Number Per Tonne
39	500	215

KERB UNIT 440x160x200mm  
Colours Available: Bluestone, Limestone, Mist



Number Per m2 (approx)	Number Per Pallet	Number Per Tonne
39	500	215



# COMMERCIAL PAVING RANGE

The Carbon Neutral certified Pavers for the Future collection are specifically designed for sustainable, high use municipal and commercial pavements. The Global Greentag Level "A" certified pavers are made from high strength designs containing recycled glass aggregates which create unique surface finishes that will last a lifetime.



**COMMERCIAL  
PAVING  
BROCHURE**

# TECHNICAL SUPPORT



## PAVING INSTALLATION GUIDE



## TECHNICAL INFORMATION

*"We have laid well over 10,000m2 of the 'Pavers for the Future' during the last 3 years and together with the 'Carbon Neutral' aspect they continue to be a very popular product. We find that consistency in manufacture makes them both easy to lay and provides a quality finish with minimal 'lipping' and little or no maintenance issues. In our experience, the versatility of this paver range makes it just as suited to large Council public open space as it is for commercial trafficable areas, driveways or in a home BBQ courtyard. These pavers have certainly stood the test of time and we are happy to use and recommend them".*

Dean & Sonia Tapping - Owners - Webb Bros Paving



**Free Samples to your door:  
[samples@islandblock.com.au](mailto:samples@islandblock.com.au)**

**ISLAND BLOCK & PAVING**  
16525 Midland Highway,  
Breadalbane,  
Tasmania 7300

**ISLAND BLOCK & PAVING**  
41 Howard Road,  
Glenorchy,  
Tasmania 7010

**ISLAND BLOCK & PAVING**  
8 Metrolink Circuit,  
Campbellfield,  
Victoria 3061

**24/7 Displays**  
3 Stony River Road, Spreyton  
Tasmania 7310

**16 River Road, Burnie  
Tasmania 7320**

**TASMANIA**

**VICTORIA**

**SOUTH AUSTRALIA**

**NEW SOUTH WALES**



DISTRIBUTOR LIST: [islandblock.com.au/distributors](http://islandblock.com.au/distributors)

**FREECALL 1800 004 499**

[islandblock.com.au](http://islandblock.com.au)

*"No one knows Bricks, Blocks & Pavers better"*

