



BLOCKS *for the* FUTURE



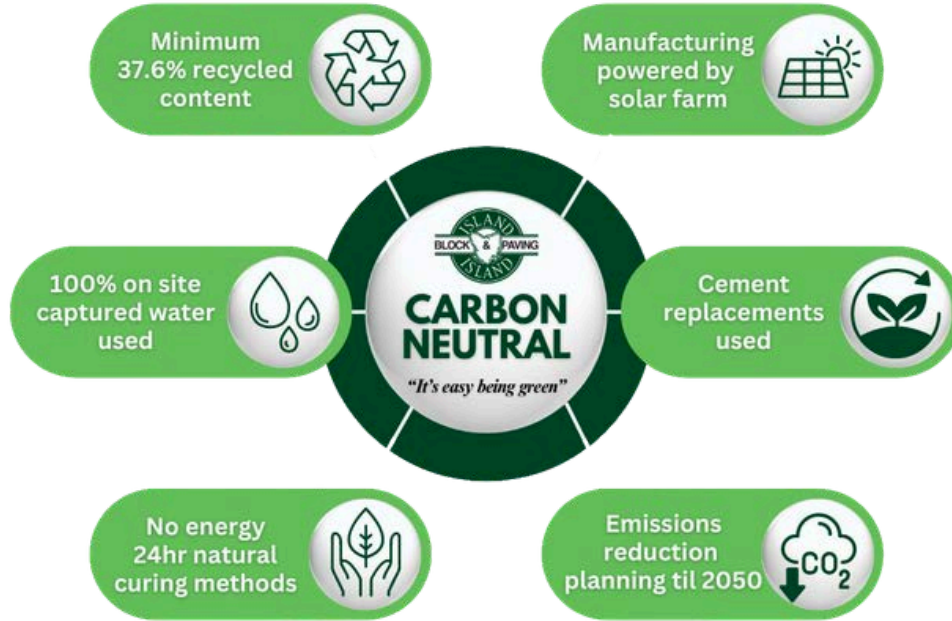
Carbon Neutral Coloured Blocks trademarked as Blocks for the Future are Australia's only Carbon Neutral certified coloured architectural building block range. The Carbon Neutral Blocks offer designers the opportunity to create high quality, sustainable structures using architectural coloured blocks comprising a high-quality engineered sand made from processed recycled glass aggregates.



islandblock.com.au

BLOCKS FOR THE FUTURE

Carbon Neutral, Blocks for the Future are available in multiple sizes, colours and surface finishes, including smooth, exposed aggregate, diamond brushed and refined. The sustainable block range also is Global Green rate level A certified so make an ideal choice for sustainable building projects and compliance with GBCA Greenstar projects.



Why Choose Our Products?

Certification:

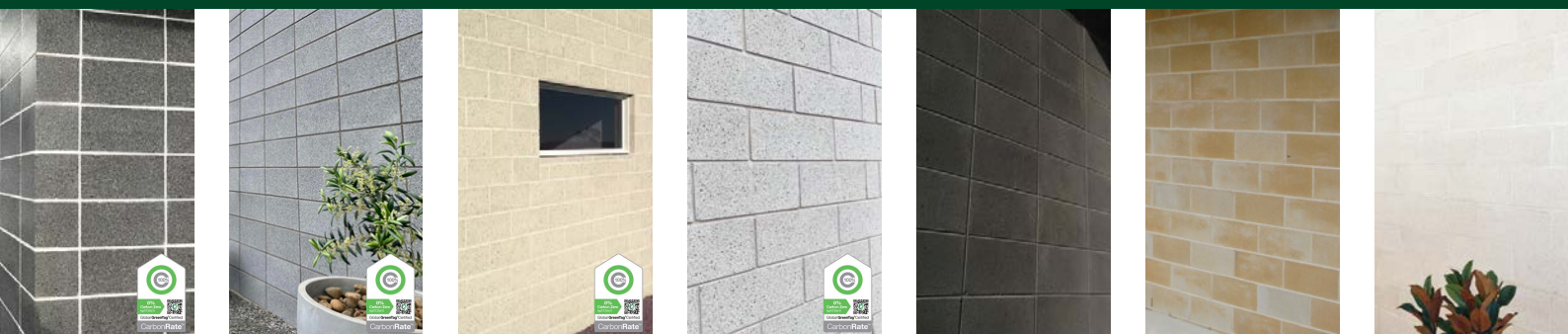
- Global GreenTag International EN 15804 EPD, Environmental Product Declaration.
- Carbon Zero rating under CarbonRATE™ certification scheme.
- GreenRate Level A certified, Best Practice product in Greenstar rating system.
- Product Health Declaration Platinum level, No VOC's.



Architects and Specifiers:

- Blocks for the Future exceed the expectations of environmentally conscious specifiers.
- Third-party audits from Global GreenTag Australia ensure credibility and no greenwashing.
- Carbon Neutral verified, no "opt in" carbon offset scheme requirements.

COLOURS AVAILABLE



Ebony ECO

Pewter ECO

Mist ECO

Pearl ECO

Graphite

Limestone

Pure White

PRODUCT FEATURES

- Surface finishes that softly glisten
- Stain Resistant
- CSIRO tested as water repellent
- Exposure Grade Tested AS 4456.1
- Salt Attack Resistant
- Whitest colour available in Australia



PRODUCT FINISHES



Smooth Coloured Finish: The Smooth Finish surface offers a smooth, consistent texture with feature aggregates and distinctive edges.



Exposed Coloured Finish: The Exposed aggregate surface finish is achieved through our signature shot blasting machine.



Refined Coloured Finish: The Refined surface finishes offers mirror like surface finishes achieved by a state-of-the-art polishing machine.



Carbon Neutral Grey Blocks: 37.6% recycled content, grey colour. Water repellent. AS 3700 compliant.



Carbon Neutral blocks are manufactured with Tech Dry water repellent emulsion. This provides water resistant products that are stain resistant, colourfast and prevents efflorescence. These are important properties for exterior products exposed to Australian weather conditions. A water repellent mortar additive along with CSIRO testing is available.

SMOOTH COLOURED FINISH



Low embodied energy
with a 100 year service life.

COLOURED BLOCK SIZES & FINISHES

SMOOTH FINISH

100mm Series	Num. Per Pallet	Num. Per Tonne
10.01 SMO 390 x 90 x 190mm	180	90
10.01 EXP	180	90
10.01 REF	180	90
10.71 SMO 390 x 90 x 90mm	360	200
10.71 EXP	360	200
10.71 REF	360	200

SURFACE FINISHES AVAILABLE

SMOOTH

Consistent, clean texture which has the same surface finish all the way around the block.

EXPOSED

Shotblasted to create a unique appearance that exposes the feature aggregate in the block.

REFINED

Consistent, clean texture which has the same surface finish all the way around the block.

EXPOSED AGGREGATE

200mm Series	Num. Per Pallet	Num. Per Tonne
20.01 SMO 390 x 190 x 190mm	90	58
20.01 EXP	90	58
20.01 REF	90	58
20.03 SMO 190 x 190 x 90mm	180	130
20.03 EXP	180	130
20.03 REF	180	130
20.42 SMO 390 x 190 x 190mm	90	62
20.42 EXP	90	62
20.42 REF	90	62
20.48 SMO 390 x 190 x 190mm	90	62
20.48 EXP	90	62

REFINED FINISH

300mm Series	Num. Per Pallet	Num. Per Tonne
30.48 SMO 390 x 290 x 190mm	70	45
30.48 EXP	70	45
30.934 SMO 390 x 290 x 190mm	60	40
30.934 EXP	60	40

- Some coloured block types are made to order
 - Approx 6-8 week lead times may occur

CONSTRUCTION TIPS

- In wet weather, ALWAYS cover up unfinished blockwork to allow the mortar to cure. This will prevent unnecessary staining to the blockwork if exposed to wet weather.
- Per above, to prevent concrete staining, cover the top of the wall immediately after any concrete core-filling for 14 days to allow for adequate curing of the concrete.
- Tech Dry mortar additive is available should a water repellent mortar be required.



SPECIFICATIONS

MASONRY UNITS:

Specification and/or Material Selection

Manufacturer:	Island Block & Paving
Product:	Blocks for the Future
Colour:	TBC
Carbon Neutral Certification:	Current third-party Carbon Neutral certificate at islandblock.com.au
GreenTag Level A Certification:	Current third party Global Greentag Level A certificate at islandblock.com.au
Manufacturing dimensions:	390mm(l)x190mm(h)x90mm(w), 390mm(l)x190mm(h)x140mm(w) 390mm(l)x190mm(h)x190mm(w), 390mm(l)x190mm(h)x240mm(w) 390mm(l)x190mm(h)x290mm(w), + All relevant accessories
Unconfined Compressive Strength:	>15MPA
Material Density: Average Dry Mass:	2150 Kg/m ³
Working Dimensions:	AS 4455.1 2008: + or - 2mm Dimensional Tolerance
Cold Water Absorption:	CWA <3% CSIRO tested to ASTM ES 14-90 "Standard Leakage in Masonry"
Exposure Grade/Salt Attack:	Suitable for severe marine environment in accordance with AS/NZS4456.1
Fire Resistance:	Fire Resistance levels deemed to comply with NCC AS 3700 6.3, 6.4 & 6.5
Compliance:	Australian Standards AS 3700, AS 4773.1 and AS4773.2 NCC 2022

WATER REPELLENT MORTAR:

TECH-DRYAD MORTAR ADDITIVE is a water repellent admixture for cement/sand mortars. It makes the mortar water resistant, reduces the mortar efflorescing and improves the adhesion of the mortar to the Carbon Neutral water repellent blocks.

Mortar materials:

Sand: Fine aggregate with low clay content (Brickie Sand) and free from efflorescing salts, selected for colour and grading.

Colour: Sand shall be selected for colour where used in face work; obtained from the same pit.

Cement type to AS 3972: GP (Portland Cement)

Water: Clean and fresh.

Water repellent admixture: TECH-DRY Techdryad Mortar Additive, product code RPTDADMA; being an approved water repellent admixture. Available from Island Block & Paving.

Dosage:

Add 400mils of Techdryad Mortar Additive with two shovels of cement (approx 12kg) and 10 shovels of sand (approx 60kg); do not exceed cement to sand ratio of 1 part cement to 5 parts sand. Mix can be 1:4 if required.

Consumption Rate:

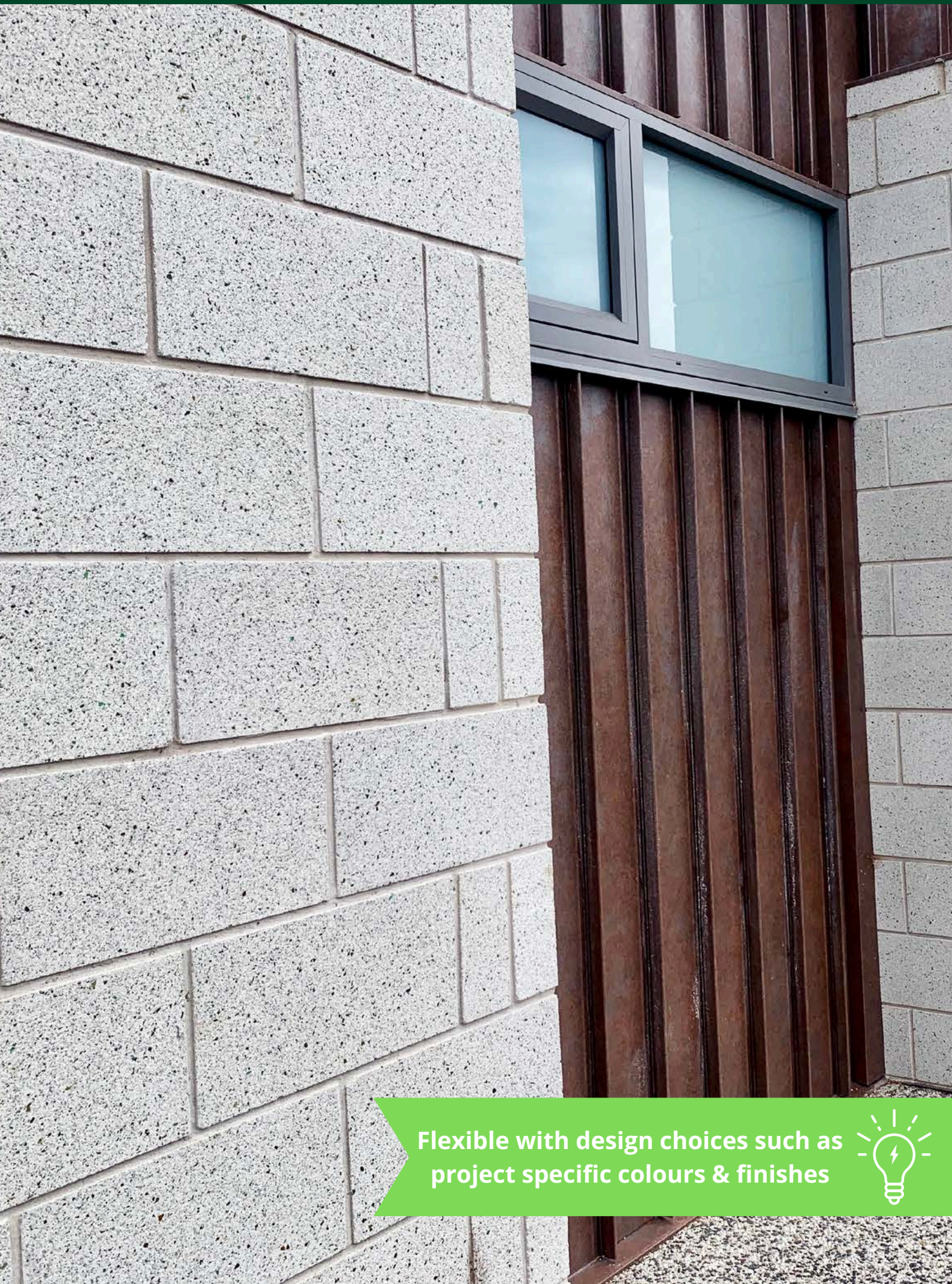
The 20 litres of TECHDRYAD MORTAR ADDITIVE will lay approx 1000x 190mm Blocks.

EXPOSED COLOURED FINISH

Low cold water absorption of below 3% provides water & stain resistance.



REFINED COLOURED FINISH



Flexible with design choices such as project specific colours & finishes



CARBON NEUTRAL GREY BLOCKS



All Carbon Neutral building blocks are available in natural grey or coloured, with 90mm, 140mm, 190mm, 240mm and 290mm wide options available.



TECHNICAL SUPPORT

Established in 1993, Island Block & Paving have over 30 years experience in masonry manufacturing. We pride ourselves in supporting designers with technical information to support masonry design, we have our own experienced team and are also 30-year members of the CMAA. We welcome your enquiries.



We are here to help...ask us

- GBCA Greenstar compliance
- Masonry design advice
- Engineering advice
- AS 3700 compliances
- Design assistance
- Project specific colours



FIRE & ACOUSTIC MANUAL



TECHNICAL & CONSTRUCTION TIPS



HIT & MISS WALL DESIGN



SOLAR ABSORPTANCE RATINGS



CLEANING GUIDE





BLOCKS *for the* FUTURE

Technical Information

Carbon Neutral certified- Current Global Greentag third party verified certificates available islandblock.com.au
Available in 90mm, 140mm, 190mm, 240mm & 290mm block widths

Working Dimensions: AS 4455.1 2008: + or - 2mm Dimensional Tolerance

Recommended Mortar per AS 3700: 1GP Cement + 1 Lime + 6 Clean Sand

Unconfined Compressive Strength: > 15 MPa

Material Density: Average Dry Mass: 2150 Kg/m³

Fire rating: FRL Design Manual at islandblock.com.au Deemed to comply as non-combustible for Bushfire prone areas, designed with accordance to AS3959 as applicable under the NCC 2019 Part G5.1

Exposure Grade & Salt Attack Resistant: Suitable for severe marine environment- less susceptible for salt attack. Severe marine environments- defined as within 1 km of a surf coast or up to 100 metres from a non-surf coast in accordance with AS/NZS 4456.10

CWA - Cold Water Absorption < 3%- deemed water repellent in wind driven rain (water repellent mortar additive available)

LRV - Light Reflectance Values: view Blocks for the Future LRV's at islandblock.com.au/LRV

SRI - Solar Reflectance Index: view Blocks for the Future SRI at islandblock.com.au/SRI



Free Samples to your door:
samples@islandblock.com.au

CONTACTS

ISLAND BLOCK & PAVING
16525 Midland Highway,
Breadalbane,
Tasmania 7300

ISLAND BLOCK & PAVING
41 Howard Road,
Glenorchy,
Tasmania 7010

ISLAND BLOCK & PAVING
8 Metrolink Circuit,
Campbellfield,
Victoria 3061

ISLAND BLOCK & PAVING
MD BRICK 40 Eddie Road,
Minchinbury,
New South Wales 2770

TASMANIA

VICTORIA

SOUTH AUSTRALIA

NEW SOUTH WALES



DISTRIBUTOR LIST: islandblock.com.au/distributors

FREECALL 1800 004 499

Email: sales@islandblock.com.au
islandblock.com.au

"No one knows Bricks, Blocks & Pavers better"

