



# BRICKS *for the* FUTURE



[islandblock.com.au](http://islandblock.com.au)



# CONTENTS



Ash ECO Smooth Finish

- PAGE 4-5**    **THE STORY & BRICK FEATURES** - Learn about the story behind the bricks and explore the many features of Island Block & Paving's Bricks for the Future ranges.
- PAGE 7**    **SURFACE FINISHES** - Explore the signature surface finished offered across the Bricks for the Future range.
- PAGE 8-9**    **PREMIUM RANGE 230x110x76mm** - Carbon Neutral certified bricks available in modern colours which provide a unique surface that softly glistens in the light.
- PAGE 10-11**    **DESIGNER RANGE 230x110x76mm** - The sophisticated choice for any project. Available in contemporary colours and neutral blends include a pure, crisp white.
- PAGE 12-13**    **RECLAIMED RANGE 230x110x76mm** - Carbon Neutral certified, the Reclaimed Brick collection encompass the charm & rustic appeal of recycled bricks. Made with recycled glass aggregates.
- PAGE 14-15**    **BESPOKE RANGE 390x110x60mm** - Carbon Neutral verified, the elongated Bespoke Brick range is provided for the architecturally inspired aiming to make a design statement.
- PAGE 17**    **BRICK SLIPS RANGE 230x25x76mm**- Carbon Neutral verified, revolutionary for sustainability. No cutting, no waste, no unnecessary emissions, high quality, low cost, sustainable brick facings.
- PAGE 19**    **SUSTAINABILITY**- Australia's first & only Carbon Neutral certified range of bricks, building blocks, pavers & retaining walls range. Third Party Verified by Global Greentag.



## THE STORY

**Bricks for the Future offer a high-quality Carbon Neutral certified brick collection from Australia's leading independently owned brick manufacturer, Island Block & Paving.**

Bricks for the Future are manufactured from a patented, engineered sand consisting of processed coloured recycled glass aggregates. Available in many on trend colours, sizes and surface finishes. Bricks for the Future are the quality brick choice for luxury projects. The boutique brick range is manufactured to the highest standards achieving third party verified net zero carbon emissions.

***"No one knows Bricks, Blocks & Pavers better".***

Available in three brick sizes -

**230mmL x 110mmW x 76mmH** – Standard brick available in the "Premium Range", "Designer Range" and the "Reclaimed Range"

**390mmL x 110mmW x 60mmH** – Elongated, Long Bricks available in the "Bespoke Range"

**230mmL x 25mmW x 76mmH** – Brick Slips or Brick Facings "Brick Slip Range"



Pure White Exposed Finish

***"No one knows Bricks, Blocks and Pavers better"***

# BRICK FEATURES

**Colours And Style:** On trend colours and textures. Australia's whitest brick with greys, pastel hues and blacks also available. Bricks for the Future are 100% colourfast, the colour is blended throughout the brick i.e. not a surface coating that can chip off.

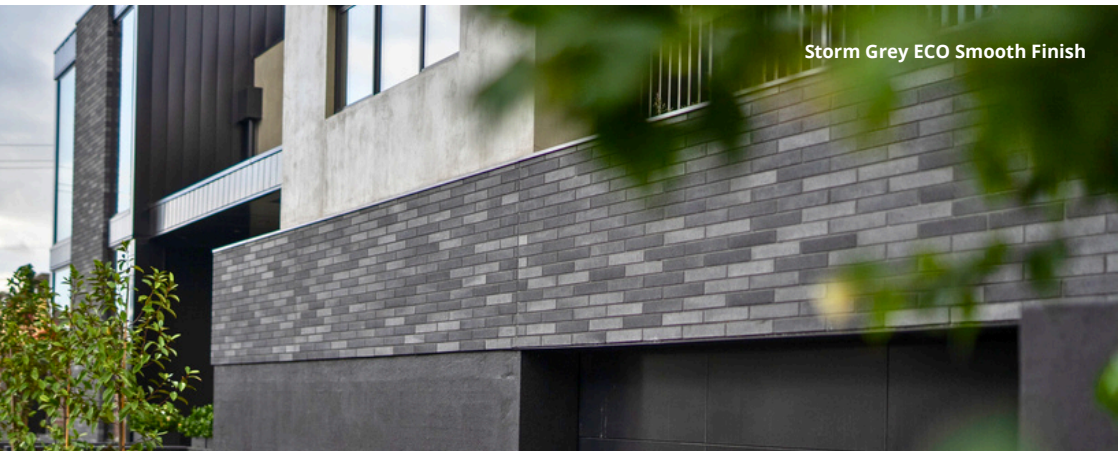
**Low Maintenance:** Stain resistant, Exposure grade and salt resistant. Made with water repellent inhibitors, cold water absorption less than 3%. 100-year service life. Size consistency, pristine brick edges and dimensional accuracy is a feature.

**Robust:** Bricks for the Future are very strong and extremely noise resistant. Their fire resistance is perfect for Australia's harsh environment.

**Affordable:** Bricks for the Future have affordable options through to high end surface finishes priced at competitive rates. Carbon Neutral bricks come with no price imposts.

**Energy Efficiency:** Bricks for the Future have a high thermal mass producing a much cooler house in summer and warm house in winter, therefore reducing household energy costs.

**Sustainability:** The Carbon Neutral certified Bricks for the Future range also have Global Greentag Level A and Platinum Level PHD's certification declaring no VOC's or harmful ingredients within: resulting in the most environmentally credentialled brick range in Australia.



Storm Grey ECO Smooth Finish

## SELECTING YOUR BRICK

**Step 1: YOUR DESIGN** The type of project design, texture, colour, sustainability requirements and the locality of the project may influence the type of bricks and mortar joints selected. Free Australia wide bricks samples, as well as informative Technical Sales Representatives are available to assist with plan estimating, pricing, colour and mortar recommendations if required.

**Step 2: SIZE, COLOUR & SURFACE TEXTURE** The size, appearance and feel of the Brick selected will help create an individual style. Bricks for the Future colours in all three sizes, vary from white tones to light neutral tones to deep dark tones and subtle blends.

**Step 3: MORTAR** The type of mortar joint (between the bricks) can have a definitive impact on the appearance of any bricks. Common Mortar Colours- Grey, White, Off white, Black or coloured mortar to match the brick colour

**Step 4: TYPES OF MORTAR JOINTS** Common Mortar Joints are Raked, Rolled, Flush or Struck. The mortar joint refers to how the band of mortar between the bricks is finished.



Pure White Refined Finish

# SURFACE FINISHES



*Bricks for the Future, Bespoke Range & Brick Slips are all available in 3 exclusive surface finishes.*

## SMOOTH FINISH

A sophisticated selection for your new home, with straight edges and an even surface, the Smooth Surface Finish is a sleek choice.

## EXPOSED FINISH

Exposed after manufacture to provide a high-end finish, the signature shot blasting machine ensures each brick is exposed on one brick face & on one end to expose the aggregates within.

## REFINED FINISH

The superior brick collection, the Refined Finish range boasts the highest end of luxury with the mirror-like surface finishes achieved through a state-of-the-art grinding and polishing machine.

# PREMIUM RANGE

230mm L x 110mm W x 76mm High

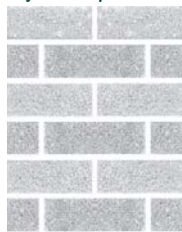


Made from an engineered sand, the Carbon Neutral and Global GreenTag certified Premium bricks come in on trend colours providing a unique surface that softly glistens in the light.



Pearl ECO Refined Finish  
8

\*Colours are indicative only. Free Samples Available.



Almond ECO

Ash ECO

Auburn ECO

Charwood ECO

Ebony ECO

Mist ECO



Mist ECO Refined Finish

9



**Pearl ECO**



**Pewter ECO**



**Pontville ECO**



**Storm Grey ECO**



**Walnut ECO**



**Whisper White ECO**

# DESIGNER RANGE

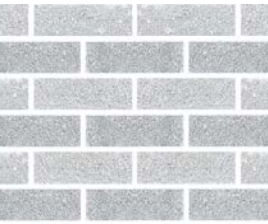
230mm L x 110mm W x 76mm High

Contemporary colours and neutral blends, designer bricks are made with natural sand aggregates. 100% Colourfast, in demand whites are a specialty.

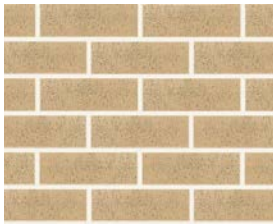


Dune & Mist Refined Finish  
10

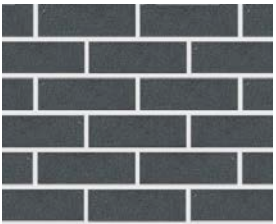
\*Colours are indicative only. Free Samples Available.



Cloudy Ash



Dune



Graphite



Ivory White



Pure White Smooth Finish

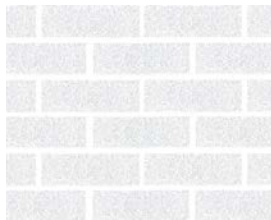
11



**Limestone**



**Mocca**



**Pure White**



**Warm White**

# RECLAIMED RANGE

230mm L x 110mm W x 76mm High



Made in Australia, the Reclaimed Bricks are crafted with recycled content. The carbon neutral reclaimed bricks provide yesterday's look today.



Reclaimed Limewash

12



Buff ECO



Char ECO



Grey ECO



Limewash ECO



Reclaimed Red  
13



Red ECO



Tuscan ECO



White ECO

# BESPOKE RANGE

390mm L x 110mm W x 60mm High



Carbon Neutral verified, the elongated Bespoke Brick range is provided for the architecturally inspired aiming to make a design statement.



Pewter ECO Refined Finish

14

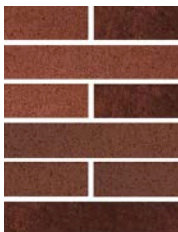
\*Colours are indicative only. Free Samples Available.



Almond ECO



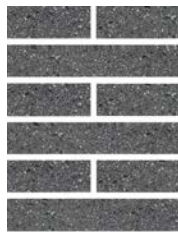
Ash ECO



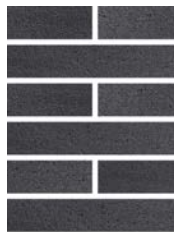
Auburn ECO



Charwood ECO



Ebony ECO



Graphite



Almond ECO Smooth Finish

15



Mist ECO



Pearl ECO



Pewter ECO



Pure White



Storm Grey ECO



Whisper White  
ECO

Pearl ECO Refined Finish



# BRICK SLIP RANGE

230mm L x 25mm W x 76mm High

The highly sustainable Brick Slips are made from an engineered sand containing 37.6% recycled content. The Carbon Neutral and Global Green tag certified Brick Slips are revolutionary for the Brick Slips Brick Facing market in Australia.

- Manufactured 25mm thick with no saw cutting requirements.
- Huge reduction over clay brick slip options which get saw cut, generate waste, generate dust and unnecessary emissions.
- Made in Australia and Carbon Neutral certified.
- Dimensionally accurate with minimal site wastage.
- New colours & finishes

**STANDARD COLOURS:** Almond ECO, Auburn ECO, Ash ECO, Pearl ECO, Pure White, Storm Grey ECO, Whisper White ECO

**MADE TO ORDER COLOURS:** P.O.A Minimum Quantities Apply



17

“We have used products from Island Block & Paving’s Carbon Neutral range across many of our building projects over the years, including for our own new house. The quality of their bricks, blocks, pavers, and retaining walls is top-notch, and knowing they’re environmentally friendly made it even better.”

Andrew Hendry  
Hendry Building & Developments



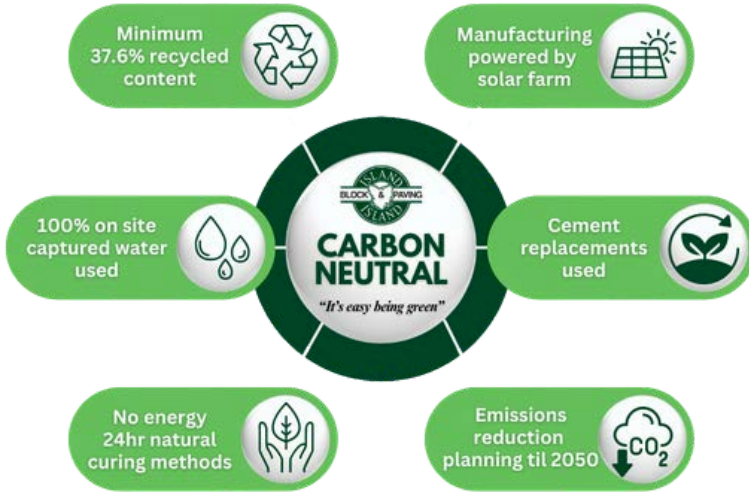


**Storm Grey ECO Smooth Finish**

# SUSTAINABILITY

## Crafted to Endure, Built for Tomorrow

Island Block & Paving, proudly offer Australia's first ever Carbon Neutral + GreenRate level A Certified Bricks, Blocks, Pavers & Retaining Wall range. The entire range is 100% Australian made, ensuring no imported bricks and no unnecessary carbon emissions. As leaders in sustainable masonry, we provide innovative and environmentally responsible solutions by producing net zero embodied carbon bricks, blocks, pavers & retaining wall blocks.



*"Since 1993 we have had a strong focus on emissions reduction planning. The Carbon Neutral third party verified certification gives specifiers comfort that all emission reduction claims are NOT just what we say, but what we do. All sustainable bricks supplied are already net carbon verified at the time of supply. With Island Block & Paving there is no confusing carbon offset requirements to register a project prior to commencement"*

**Jason Bassett, Island Block & Paving CEO**



# TECHNICAL INFORMATION

**Standard Bricks -230mmL x 110mmW x 76mmH** (48 per m<sup>2</sup>, 500 per pallet, weight 3.16kg each)

**Brick Slips -230mmL x 25mmW x 76mmH** (48 per m<sup>2</sup>, 1950 per pallet, 0.9 kg each)

**Bespoke Bricks -390mmL x 110mmW x 60mmH** (36 per m<sup>2</sup>, 450 per pallet, 4.2kg each)



## Mist ECO Smooth Finish

**Working Dimensions:** AS 4455.1 2008; + or - 2mm Dimensional Tolerance

**Recommended Mortar per AS 3700:** 1GP Cement + 1 Lime + 6 Clean Sand

**Unconfined Compressive Strength:** > 15 MPa

**Material Density: Average Dry Mass:** 2150 Kg/m<sup>3</sup>

**Fire rating:** FRL Integrity/Insulation 120 mins (110mm wide). Deemed to comply as non-combustible for Bushfire prone areas, designed with accordance to AS3959 as applicable under the NCC 2019 Part G5.1

**Exposure Grade & Salt Attack Resistant:** Suitable for severe marine environment- less susceptible for salt attack. Severe marine environments- defined as within 1 km of a surf coast or up to 100 metres from a non-surf coast in accordance with AS/ NZS 4456.10

**CWA - Cold Water Absorption < 3%**

**LRV - Light Reflectance Values:** view Bricks for the Future LRV's at [www.islandblock.com.au/LRV](http://www.islandblock.com.au/LRV)

**SRI - Solar Reflectance Index:** view Bricks for the Future SRI at [www.islandblock.com.au/SRI](http://www.islandblock.com.au/SRI)

**Special Shapes:** 45 degree Squint Bricks and Solids are available for most ranges.

"Bricks for the Future are my preferred type of bricks to lay. I prefer them over clay types as they are dimensionally very accurate, no size variation which helps me save time and get the best result for my customers. The sustainable aspect is great as the engineered glass sand provides nice surface finishes in modern colours. I find cleaning easy, basically I lay them clean and high-pressure wash after 7 days mortar curing. Great products."

Greg Longmore – Longmore Bricklaying (20 years' experience)



[islandblock.com.au](http://islandblock.com.au)

*"No one knows Bricks, Blocks & Pavers better"*

