



PAVERS *for the* FUTURE™

The premium quality Pavers for the Future collection are specifically designed for high use municipal and commercial pavements. The Global Greentag certified pavers are made from high strength mix designs containing recycled glass aggregates which create unique surface finishes that will last a lifetime.

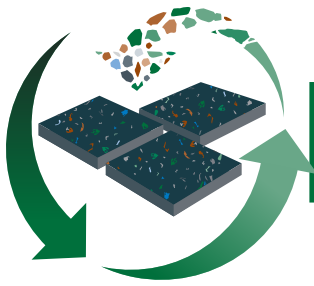


Patent No.: 203206165

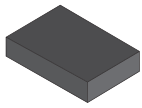


- **Unique surface finishes**
- **Robust: 16.3 kn breaking load**
- **Stain Resistant: made with surface densifiers**
- **Slip Resistant: achieve a P5 rating**
- **Hard Wearing: abrasion resistance 3.2**
- **Environmentally responsible: lower CO2**





PAVERS *for the* FUTURE™



THE PAVING STORY

Pavers for the Future, manufactured by award winning Tasmanian owned company Island Block & Paving, offer a durable, premium quality paving collection, specifically designed for trafficable, high use public spaces with large volume pedestrian activity.

Patented and Global Greentag Certified, Pavers for the Future are an environmentally responsible product with many benefits. Pavers for the Future are durable, low maintenance, stain resistant, slip resistant, have a variety of unique surface finish options and are manufactured to strict dimensional tolerances meaning size variations causing potential trip hazards are not a factor. Pavers for the Future predominate sizes are 400mm x 300mm x 65mm thick and 300mm x 200mm x 65mm thick, designed to withstand commercial traffic as well as high pedestrian volumes. Paver sizes are interchangeable and allow for endless design opportunities.



COLOURS AND STYLE: Pavers for the Future offer a vast range of colours. Surface finishes include polished, exposed and standard finishes. Pavers for the Future are colour-fast, the colour is blended throughout the paver, not a surface coatings that can chip off.



LOW MAINTENANCE: Pavers for the Future require minimal maintenance to keep them looking pristine and are manufactured with surface densifiers to achieve a non-slip easy to clean surface. Pavers are easy to replace and/or lift to access underground services.



ROBUST: Pavers for the Future are very strong and easily exceed minimum test requirements. Their strength and durable surface is perfect for high use municipal or commercial areas.



AFFORDABLE: Pavers for the Future, despite their unique high end finish, are very price competitive. Designers can also obtain technical assistance from Island Block & Paving's experienced team who have resources such as the CMAA engineers to assist.

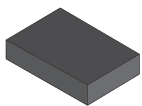


TESTING: Pavers for the Future testing exceeds the requirements of AS/NZS 4455 and CMAA design requirements. Test results are listed below and are available on request.



SUSTAINABILITY: Pavers for the Future are manufactured to stand the test of time. Recycled aggregates are used meaning landfill is reduced, low embodied energy due to modern natural curing methods, 100% captured water is used and CO2 emissions are reduced.

To view the Pavers for the Future Premium range Life Cycle Analysis islandblock.com.au/sustainable-products/



SELECTING YOUR PAVING

Step 1: PAVING SHAPE & THICKNESS

| | Size | Coverage | Surface Finish | Application |
|--|------------------|-------------------------------|---|--|
| | 400 x 300 x 65mm | 8.25 units per m ² | Standard, Exposed, Refined & Polished | Pedestrian, Domestic Vehicles, Public Spaces/Commercial Vehicles |
| | 300 x 200 x 65mm | 16.5 units per m ² | Standard, Exposed, Refined & Polished | Pedestrian, Domestic Vehicles, Public Spaces/Commercial Vehicles |
| | 400 x 300 x 50mm | 8.25 units per m ² | Standard & Exposed (Limited Colours) | Pedestrian |

Step 2: COLOUR, DESIGN & SURFACE TEXTURE

The design loads, appearance and location of any new pavement all contribute to the final selection of shape and colours. In accordance with AS/NZS 4455 and the CMAA design manual, Pavers for the Future exceed the testing requirements for breaking load, abrasion and slip resistance. The Pavers for the Future interchangeable 400 x 300 x 65mm and 300 x 200 x 65mm shapes allow endless possibilities for the laying patterns, whilst the three different surface finishes provide unlimited design options. Lighting is another consideration that can be incorporated as the Pavers for the Future add another dimension to the design process with the glass component within the pavers providing a unique surface finish that is further enhanced with artificial light.

STANDARD FINISH



STANDARD FINISH

STANDARD FINISH pavers have a consistent ultra-smooth even texture with a unique finish that glistens in various light conditions.

| | Size | Weight | Coverage |
|---|------------------|-----------|-------------------------------|
|  | 400 x 300 x 65mm | 15.5kg ea | 8.25 units per m ² |
|  | 300 x 200 x 65mm | 7.5kg ea | 16.5 units per m ² |

- Coloured, recycled glass aggregates
- Trafficable, high strength pavers
- True to size, easy to lay
- Global Greentag certified
- Comply with Aus standards
- 100% Colour-fast



STANDARD FINISH COLOURS



SPECIFICATIONS

| CONTENT | TEST RESULTS |
|-----------------------------------|-------------------|
| Dimensional Accuracy | DP82 |
| Breaking Load | 162kn |
| Abrasion Resistance | 32 |
| Slip Resistance | P5 |
| Salt Resistance | Yes |
| Liability to Efflorescence | Nil to sight |
| Test Standards | AS/NZS 4455, 4456 |
| Lead Time | 4-8 weeks |

"We have laid well over 10,000m² of the 'Pavers for the Future' during the last 3 years in the greater Hobart area and together with the 'ECO' aspect they continue to be a very popular product. We find that consistency in manufacture makes them both easy to lay and provides a quality finish with minimal 'flipping' and little or no maintenance issues. In our experience, the versatility of this paver range makes it just as suited to large Council public open space as it is for commercial trafficable areas, driveways or in a home BBQ courtyard. These pavers have certainly stood the test of time and we are happy to use and recommend them".

Dean & Sonia Tapping - Owners - Webb Bros Paving

REFINED & POLISHED FINISHES



REFINED & POLISHED FINISHES

REFINED & POLISHED pavers are the premium finish. Pavers pass through a state of the art "Cassani" grinding and polishing machine to achieve various high end surface finishes.

PAVERS FOR THE FUTURE SPECS

| | Size | Weight | Coverage |
|--|------------------|-----------|-------------------------------|
|  | 400 x 300 x 65mm | 15.5kg ea | 8.25 units per m ² |
|  | 300 x 200 x 65mm | 7.5kg ea | 16.5 units per m ² |

- Coloured, recycled glass aggregates
- Unique finish that glistens in the light
- True to size, easy to lay
- Global Greentag certified
- Premium finish
- Slip resistant



REFINED & POLISHED FINISH COLOURS



Beach ECO



Dune ECO



Ebony ECO



Mist ECO



Pewter ECO

REFINED & POLISHED FINISH COLOURS "NON ECO"



Ebony Pebble



Limestone Pebble



Mist Pebble



Pewter Pebble



Walnut Pebble

"Non ECO" made without recycled aggregates

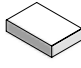
EXPOSED AGGREGATE FINISH



EXPOSED AGGREGATE FINISH

EXPOSED FINISH pavers are treated after manufacture by shot blasting to create a distinctively unique appearance that exposes the aggregate on the paver surface.

PAVERS FOR THE FUTURE SPECS

| | Size | Weight | Coverage |
|---|------------------|-----------|-------------------------------|
|  | 400 x 300 x 65mm | 15.5kg ea | 8.25 units per m ² |
|  | 300 x 200 x 65mm | 7.5kg ea | 16.5 units per m ² |

- Coloured, recycled glass aggregates
- Unique textured finish
- True to size, easy to lay
- Global Greentag certified
- Stain resistant
- 100% Colour-fast



EXPOSED AGGREGATE COLOURS



Beach ECO



Dune ECO



Ebony ECO



Mist ECO



Pewter ECO

EXPOSED AGGREGATE COLOURS "NON ECO"



Ebony Pebble



Limestone Pebble



Mist Pebble



Pewter Pebble



Walnut Pebble

"Non ECO" made without recycled aggregates

